



SAWING

- Reciprocating Blades • Jigsaw Blades • Pipe Cutter
- Hacksaw Blades & Frames

SAWING

Sawing Index

205	Saw Blades Hacksaw Blades
206	Saw Blades Hacksaw Blades & Frames
208	Saw Blades Helpful Hints
202	Saw Blades Jigsaw – Brand Equivalent
184	Saw Blades Jigsaw – Selection Chart
187	Saw Blades Jigsaw Sets
186	Saw Blades Jigsaw Types
188	Saw Blades Jigsaw, T-Shank
198	Saw Blades Jigsaw, U-Shank
204	Saw Blades Pipe Cutter – EzyGrind
207	Saw Blades Powersaw
168	Saw Blades Reciprocating
182	Saw Blades Reciprocating – Brand Equivalent
166	Saw Blades Reciprocating – Selection Chart
169	Saw Blades Reciprocating Sets
203	Saw Blades Technical Information

Saw Blades Reciprocating – Selection Chart



Catalogue Code	Page No.	Wood						Metal							Masonry				
		Hard Wood & Soft Wood	Wood & Nails	MDF	Green Wood	Pallet	Window Frame	Steel	Stainless Steel	Aluminium	Copper & Brass	Cast Iron	Sheet Metal	Metal Pipes	Plasterboard	Cement Sheet	Ceramics & Tiles	Hebel	Brick
H505	174		●			○	○	●	○	●	●		○	●					
H506	175	●																	
H507	175	●	○			○	○	○											
H508	172		●					●	○	○	●		○	○					
H509	173		●					○			○		○	○					
H510	174	○	●			●	●	●			●								
H511	174	○	●			●	●	●			●		●						
H512	170							●	○				●						
H513	170							●	○				●	○					
H514	171							●	○				●						
H515	171							●	○				●						
H516	170	○	●			●	●	●			●		●						
H517	171							●	○	●	●		○						
H518	172							●	○	●	●		○						
H519	173							●	○	●	●		○						
H520	176	●																	
H521	176	●																	
H522	177	●												●					
H523	177	●																	
H524	177	●																	
H525	176	●			●														
H526	178	●	●			●	●	○											
H527	178	○	○			○	○	○											
H528	178	●	●			●	●	○											
H529	179	○			●														
H530	179	●												●				○	
H531	180							●	●				●						
H532	180	●		●											●			●	
H533	181											●		●	○	○	●	○	
H534	180																		
H535	172		●					●		●	●			●					
H536	179	●			●														
H539	175							●	●	●	●	●	○	●					
H540	181													○	●			●	●

● Optimal ○ Effective

Specialty Materials								
PVC Plastics	Acrylic	Insulation Material	Polystyrene	Leather	Rubber	Cardboard	Fibreglass	Carbon Fibre
●								
○								
○								
○								
●								
●							○	○
	●						●	●
							●	
							○	
○		●	●	●	●	●		

Cut Type							
Clean Cut	Rough Cut	Straight Cut	Curved Cut	Plunge Cut	Fast Cut	Demolition	Fire & Rescue
	●	●		●	●	●	
	●	●		●	●	●	
	●	●		●	●	●	●
					○		
		●		●	●		
●					●		
●		●			●		
●					●		
●		●		●	●		
●					●		
●					●		
●					●		
●					●		
						○	
	○				●		
	○				○		
	○	○		●	●		
●	○	○		●	●		
●	○		●				
●	○	●					
●	○	○		●	○		
○	○				○		
○	○				●		
○	○				●		
●					●		
●	○				●		
●		●			●		
●	●	●			●		



Check out the demo

Special application premium grade blades are highlighted in purple for the most demanding jobs. The blade that professionals prefer to use.

DOMINATOR



FAST STRAIGHT CUTS



Twin-Cut
Twin-Cut geometry reduces tooth breakage



Straight Cut
25mm tall body for straighter, more accurate cuts



Thin kerf
Designed for flexibility and speed

HYPER CUT



DEMOLITION MADE EASY



Demolition
Special thick and robust blade designed for demolition work.



HEAVY DUTY
Break resistant body for maximum durability



Plunge Cut
Taper back design for plunge cutting in hard-to-reach applications

MEGA SHARP



MEGA FAST CLEAN CUTS



Patented M-Tooth design cuts on both forward and back stroke for 2X cutting speed and 3X life



Increased Tang Angle
For optimal speed and cutting performance

POWER CURVE



THE NEXT GENERATION



Curved blade design allows higher tooth engagement resulting in more efficient cuts



Battery Saving Technology
Power Curve allows high power transfer and longer battery life



Thin kerf
Designed for flexibility and speed

ULTRA



ULTRA HARD ULTIMATE STRENGTH



Carbide Tip
Tungsten carbide teeth for high wear resistance when cutting abrasive materials



Break resistant body for maximum durability

Saw Blades Reciprocating Sets



Specially selected blade sets for wood or metal applications:



H589 0005

Metal set: cuts steel, aluminium, copper, brass sheets or pipes and also in wood and nails.

Made from Cobalt Bi-Metal HSS for flexibility, heat and break-resistance, lasting up to 10X longer than high carbon steel blades.

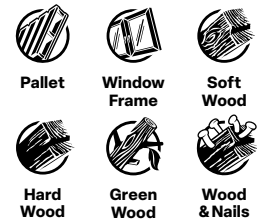


H590 0005

Wood set: cuts soft wood, hard wood, pallets, window frames and wood and nails.

Cobalt Bi-Metal HSS blades for flexibility, heat and break-resistance for long lasting application.

High carbon steel (HCS) blades are flexible and suitable for cutting soft materials.



Discount Code: C0502

Description	Content	Item #	Barcode
5 Pce Metal Cutting Reciprocating Blade Set (225mm)	H517 22514 Power Curve 14 TPI, H513 22518 Dominator 18 TPI, H509 22514 Dominator 10-14 TPI, H505 22510 Hypercut 10 TPI, H508 22514 Metal 10-14 TPI	H589 0005	9311963623351
5 Pce Wood Cutting Reciprocating Blade Set (225mm)	H506 22506 Hypercut 6 TPI, H507 22508 Hypercut Fire & Rescue 5-8 TPI, H520 22504 Power Curve 4 TPI, H525 22503 Green Wood 3 TPI, H526 22514 Wood & Nails 10-14 TPI	H590 0005	9311963623368



H512 Metal Reciprocating Blade, Sheet Metal >1.2mm

Flexible, finely toothed blade for clean cuts in sheet metal. Suitable for cutting steel and stainless steel (>1.2mm).

- Thin kerf for flexibility and speed
- Made from Cobalt Bi-Metal HSS for flexibility, heat and break-resistance, lasting up to 10X longer than high carbon steel blades
- Teeth milled and wavy set for straight, fine cuts

Discount Group: C0502

O/A Length	Cut Length	Tooth Pitch	Blade Thickness	Blade Height	Blade Material	Qty	Item #	Barcode				
									CUT TYPE			
									Thickness	Clean	Fast	Straight
150	130	24 TPI	0.9	19	Cobalt Bi-Metal	2 Pack	H512 15024	9311963599045				



PROSERIES

H513 Metal Reciprocating Blade, Sheet Metal >1.5mm, Dominator

High performance blade with an extra tall and thin body for fast, accurate and straight plunge cuts in sheet metal. Suitable for cutting steel, stainless steel and metal pipe (>1.5mm).

- 25mm tall body reduces twisting for straighter, more accurate cuts
- Thin kerf for flexibility and speed
- Increased tang angle for optimal speed and cutting performance
- Made from Cobalt Bi-Metal HSS for flexibility, heat and break-resistance, lasting up to 10X longer than high carbon steel blades
- Teeth milled and side set for straight, fast cutting

Discount Group: C0502

O/A Length	Cut Length	Tooth Pitch	Blade Thickness	Blade Height	Blade Material	Qty	Item #	Barcode				
									CUT TYPE			
									Thickness	Clean	Fast	Straight
150	130	18 TPI	0.9	25	Cobalt Bi-Metal	2 Pack	H513 15018	9311963599298				
225	205	18 TPI	0.9	25	Cobalt Bi-Metal	2 Pack	H513 22518	9311963599304				
300	280	18 TPI	0.9	25	Cobalt Bi-Metal	2 Pack	H513 30018	9311963599311				



PROSERIES

H516 Metal Reciprocating Blade, Sheet Metal 1.5–6.0mm, Mega Sharp

High performance blade with patented M-Tooth geometry. Suitable for cutting steel, copper (1.5–6.0mm), wood and nails and PVC plastics.

- Patented M-Tooth design cuts on both forward and back stroke for 2X cutting speed and 3X life
- Thin kerf for flexibility and speed
- Increased tang angle for optimal speed and cutting performance
- Made from Cobalt Bi-Metal HSS for flexibility, heat and break-resistance, lasting up to 10X longer than high carbon steel blades

Discount Group: C0502

O/A Length	Cut Length	Tooth Pitch	Blade Thickness	Blade Height	Blade Material	Qty	Item #	Barcode				
									CUT TYPE			
									Thickness	Clean	Fast	Straight
150	130	8 TPI	0.9	19	Cobalt Bi-Metal	2 Pack	H516 15008	9311963599373				
200	180	8 TPI	0.9	19	Cobalt Bi-Metal	2 Pack	H516 20008	9311963599380				





PROSERIES

H514 Metal Reciprocating Blade, Sheet Metal 1.5–2.5mm, Power Curve

Flexible, general purpose blade for fast, clean cuts in sheet metal. Suitable for cutting steel and stainless steel (1.5–2.5mm).

- Curved blade design allows higher tooth engagement resulting in 30% faster, more efficient and effective cuts
- Power Curve supports the orbital movement of the reciprocating saw allowing high power transfer and longer battery life
- Thin kerf for flexibility and speed
- Increased tang angle for optimal speed and cutting performance
- Made from Cobalt Bi-Metal HSS for flexibility, heat and break-resistance, lasting up to 10X longer than high carbon steel blades
- Teeth milled and wavy set for straight, fine cuts

Discount Group: C0502

30% FASTER Battery Saving Technology		CUT TYPE				Sheet Metal Steel Stainless Steel		
		Thickness	Clean	Fast	Straight			
		1.5–2.5mm	●	●				
			Rough	Plunge	Curved			
O/A Length	Cut Length	Tooth Pitch	Blade Thickness	Blade Height	Blade Material	Qty	Item #	Barcode
150	130	18 TPI	0.9	19	Cobalt Bi-Metal	2 Pack	H514 15018	9311963599090
225	205	18 TPI	0.9	19	Cobalt Bi-Metal	2 Pack	H514 22518	9311963599106



PROSERIES

H517 Metal Reciprocating Blade, Sheet Metal 2.0–3.5mm, Power Curve

Flexible, general purpose blade for fast, clean cuts in sheet metal. Suitable for cutting steel, stainless steel, aluminium and copper (2.0–3.5mm).

- Curved blade design allows higher tooth engagement resulting in 30% faster, more efficient and effective cuts
- Power Curve supports the orbital movement of the reciprocating saw allowing high power transfer and longer battery life
- Thin kerf for flexibility and speed
- Increased tang angle for optimal speed and cutting performance
- Made from Cobalt Bi-Metal HSS for flexibility, heat and break-resistance, lasting up to 10X longer than high carbon steel blades
- Teeth milled and wavy set for straight, fine cuts

Discount Group: C0502

30% FASTER Battery Saving Technology		CUT TYPE				Sheet Metal Steel Stainless Steel Aluminium Copper & Brass				
		Thickness	Clean	Fast	Straight					
		2.0–3.5mm	●	●						
			Rough	Plunge	Curved					
O/A Length	Cut Length	Tooth Pitch	Blade Thickness	Blade Height	Blade Material	Qty	Item #	Barcode		
150	130	14 TPI	0.9	19	Cobalt Bi-Metal	2 Pack	H517 15014	9311963599137		
225	205	14 TPI	0.9	19	Cobalt Bi-Metal	2 Pack	H517 22514	9311963599144		



H515 Metal Reciprocating Blade, Sheet Metal 1.5–4.0mm

Flexible, general purpose blade for clean cuts in sheet metal. Suitable for cutting steel and stainless steel (1.5–4.0mm).

- Thin kerf for flexibility and speed
- Made from Cobalt Bi-Metal HSS for flexibility, heat and break-resistance, lasting up to 10X longer than high carbon steel blades
- Teeth milled and wavy set for straight, fine cuts

Discount Group: C0502

		CUT TYPE				Sheet Metal Steel Stainless Steel		
		Thickness	Clean	Fast	Straight			
		1.5–4.0mm	●					
			Rough	Plunge	Curved			
O/A Length	Cut Length	Tooth Pitch	Blade Thickness	Blade Height	Blade Material	Qty	Item #	Barcode
150	130	18 TPI	0.9	19	Cobalt Bi-Metal	2 Pack	H515 15018	9311963599076
200	180	18 TPI	0.9	19	Cobalt Bi-Metal	2 Pack	H515 20018	9311963599083



H518 Metal Reciprocating Blade, Sheet Metal 2.0-3.5mm

Flexible, general purpose blade for clean cuts in sheet metal. Suitable for cutting steel, stainless steel, aluminium and copper (2.0-3.5mm).

- Thin kerf for flexibility and speed
- Made from Cobalt Bi-Metal HSS for flexibility, heat and break-resistance, lasting up to 10X longer than high carbon steel blades
- Teeth milled and wavy set for straight, fine cuts

Discount Group: C0502

O/A Length	Cut Length	Tooth Pitch	Blade Thickness	Blade Height	Blade Material	Qty	Item #	Barcode				
									CUT TYPE			
									Thickness	Clean	Fast	Straight
150	130	14 TPI	0.9	19	Cobalt Bi-Metal	2 Pack	H518 15014	9311963599113				
200	180	14 TPI	0.9	19	Cobalt Bi-Metal	2 Pack	H518 20014	9311963599120				



H535 Metal Reciprocating Blade, Shark

Flexible, general purpose blade for fast, aggressive cuts in metal. Suitable for cutting steel, aluminium, copper, metal pipe (>2.5 mm) and wood and nails.

- Shark slot design for optimum heat dissipation and longer tool life
- Shark slot design reduces weight and increases battery life
- Shark tooth design allows fast, aggressive yet stable cutting
- Thin kerf for flexibility and speed
- Made from Cobalt Bi-Metal HSS for flexibility, heat and break-resistance, lasting up to 10X longer than high carbon steel blades
- Teeth milled and side set for fast cutting

Discount Group: C0502

O/A Length	Cut Length	Tooth Pitch	Blade Thickness	Blade Height	Blade Material	Qty	Item #	Barcode				
									CUT TYPE			
									Thickness	Clean	Fast	Straight
150	130	9-13 TPI	0.9	19	Cobalt Bi-Metal	2 Pack	H535 15013	9311963600284				



H508 Metal Reciprocating Blade, Twin-Cut

Flexible blade with innovative Twin-Cut tooth geometry designed to reduce tooth breakage and increase blade life when cutting metal. Suitable for cutting steel, aluminium, copper, metal pipe (>2.5mm) and wood and nails.

- Twin-Cut geometry reduces tooth breakage, combining speed and durability
- Thin kerf for flexibility and speed
- Increased tang angle for optimal speed and cutting performance
- Made from Cobalt Bi-Metal HSS for flexibility, heat and break-resistance, lasting up to 10X longer than high carbon steel blades
- Teeth milled and side set for fast cutting

Discount Group: C0502

O/A Length	Cut Length	Tooth Pitch	Blade Thickness	Blade Height	Blade Material	Qty	Item #	Barcode				
									CUT TYPE			
									Thickness	Clean	Fast	Straight
150	130	10-14 TPI	0.9	19	Cobalt Bi-Metal	2 Pack	H508 15014	9311963599052				
225	205	10-14 TPI	0.9	19	Cobalt Bi-Metal	2 Pack	H508 22514	9311963599069				



PROSERIES

H509 Metal Reciprocating Blade, Dominator

High performance blade with innovative Twin-Cut tooth geometry. Extra tall and thin body for fast, accurate and straight plunge cuts in metal. Suitable for cutting steel, copper, metal pipe (>2.5mm) and wood and nails.

- Twin-Cut geometry reduces tooth breakage, combining speed and durability
- 25mm tall body reduces twisting for straighter, more accurate cuts
- Thin kerf for flexibility and speed
- Increased tang angle for optimal speed and cutting performance
- Made from Cobalt Bi-Metal HSS for flexibility, heat and break-resistance, lasting up to 10X longer than high carbon steel blades
- Teeth milled and side set for straight, fast, rough cutting

Discount Group: C0502

				CUT TYPE											
				Thickness	Clean	Fast	Straight								
				>2.5mm		●	●								
						Rough	Plunge	Curved							
O/A Length	Cut Length	Tooth Pitch	Blade Thickness	Blade Height	Blade Material	Qty	Item #	Barcode							
150	130	10-14 TPI	0.9	25	Cobalt Bi-Metal	2 Pack	H509 15014	9311963599267							
225	205	10-14 TPI	0.9	25	Cobalt Bi-Metal	2 Pack	H509 22514	9311963599274							
300	280	10-14 TPI	0.9	25	Cobalt Bi-Metal	2 Pack	H509 30014	9311963599281							



H519 Metal Reciprocating Blade, Metal

Flexible, general purpose blade for cutting metal. Suitable for cutting steel, stainless steel, aluminium and copper (3.0-5.0mm).

- Thin kerf for flexibility and speed
- Made from Cobalt Bi-Metal HSS for flexibility, heat and break-resistance, lasting up to 10X longer than high carbon steel blades
- Teeth milled and side set for straight, fast cutting

Discount Group: C0502

				CUT TYPE							
				Thickness	Clean	Fast	Straight				
				3.0-5.0mm		●	●				
						Rough	Plunge	Curved			
O/A Length	Cut Length	Tooth Pitch	Blade Thickness	Blade Height	Blade Material	Qty	Item #	Barcode			
150	130	10 TPI	0.9	19	Cobalt Bi-Metal	2 Pack	H519 15010	9311963599151			
200	180	10 TPI	0.9	19	Cobalt Bi-Metal	2 Pack	H519 20010	9311963599168			
280	260	10 TPI	0.9	19	Cobalt Bi-Metal	2 Pack	H519 28010	9311963599175			

PROSERIES



H510 Metal Reciprocating Blade, Mega Sharp

High performance blade with patented M-Tooth geometry. Suitable for cutting steel, copper (2.5-10mm), wood and nails and PVC plastics.

- Patented M-Tooth design cuts on both forward and back stroke for 2X cutting speed and 3X life
- Thin kerf for flexibility and speed
- Increased tang angle for optimal speed and cutting performance
- Made from Cobalt Bi-Metal HSS for flexibility, heat and break-resistance, lasting up to 10X longer than high carbon steel blades

Discount Group: C0502

				CUT TYPE											
				Thickness	Clean	Fast	Straight								
				2.5-10mm		●	●								
						Rough	Plunge	Curved							
O/A Length	Cut Length	Tooth Pitch	Blade Thickness	Blade Height	Blade Material	Qty	Item #	Barcode							
150	130	5 TPI	0.9	19	Cobalt Bi-Metal	2 Pack	H510 15005	9311963599397							
200	205	5 TPI	0.9	19	Cobalt Bi-Metal	2 Pack	H510 20005	9311963599403							
280	260	5 TPI	0.9	19	Cobalt Bi-Metal	2 Pack	H510 28005	9311963599410							



PROSERIES



H510 Metal Reciprocating Blade, Mega Sharp, Double Shank

High performance blade with double shank design and patented M-Tooth geometry. Suitable for cutting steel, copper (2.5–10mm), wood and nails and PVC plastics.

- Double shank design for complete use of cutting length and up to 60% better economy
- Patented M-Tooth design cuts on both forward and back stroke for 2X cutting speed and 3X life
- Thin kerf for flexibility and speed
- Increased tang angle for optimal speed and cutting performance
- Made from Cobalt Bi-Metal HSS for flexibility, heat and break-resistance, lasting up to 10X longer than high carbon steel blades

Discount Group: C0502

2X FASTER 3X LIFE Economy			CUT TYPE										
O/A Length	Cut Length	Tooth Pitch	Blade Thickness	Blade Height	Blade Material	Qty	Item #	Barcode	Thickness				
									Clean	Fast	Straight	Rough	Plunge
240	200	5 TPI	0.9	19	Cobalt Bi-Metal	2 Pack	H510 24005	9311963599434	2.5-10mm				

PROSERIES



H511 Metal Reciprocating Blade, Pipe, Mega Sharp

Designed for parallel cuts in large diameter pipe. High performance blade with patented M-Tooth geometry. Suitable for cutting steel, copper (2.5–10mm), wood and nails and PVC plastics.

- Patented M-Tooth design cuts on both forward and back stroke for 2X cutting speed and 3X life
- Extra thick blade suitable for parallel cuts in large diameter pipes
- Increased tang angle for optimal speed and cutting performance
- Made from Cobalt Bi-Metal HSS for flexibility, heat and break-resistance, lasting up to 10X longer than high carbon steel blades

Discount Group: C0502

2X FASTER 3X LIFE			CUT TYPE										
O/A Length	Cut Length	Tooth Pitch	Blade Thickness	Blade Height	Blade Material	Qty	Item #	Barcode	Thickness				
									Clean	Fast	Straight	Rough	Plunge
200	180	5 TPI	1.27	19	Cobalt Bi-Metal	2 Pack	H511 20005	9311963599427	2.5-10mm				

PROSERIES



H505 Demolition Reciprocating Blade, Metal, Hypercut

Special thick and robust blade designed for demolition work in metal. Suitable for cutting steel, stainless steel, aluminium, copper, metal pipe (>3.0mm), PVC plastics and wood and nails.

- Heavy Duty thick, rigid body resists bending and fracturing for maximum durability
- Made from Cobalt Bi-Metal HSS for flexibility, heat and break-resistance, lasting up to 10X longer than high carbon steel blades
- Teeth milled and side set for straight, fast cutting
- Taper back design for plunge cutting and easier start in hard-to-reach applications

Discount Group: C0502

HEAVY DUTY Demolition			CUT TYPE										
O/A Length	Cut Length	Tooth Pitch	Blade Thickness	Blade Height	Blade Material	Qty	Item #	Barcode	Thickness				
									Clean	Fast	Straight	Rough	Plunge
150	130	10 TPI	1.57	22	Cobalt Bi-Metal	2 Pack	H505 15010	9311963599182	>3.0mm				
225	205	10 TPI	1.57	22	Cobalt Bi-Metal	2 Pack	H505 22510	9311963599199					
300	280	10 TPI	1.57	22	Cobalt Bi-Metal	2 Pack	H505 30010	9311963599205					



H539 Metal Reciprocating Blade, Thick Metal, Carbide Teeth

These blades are the ultimate cutting solution for thick-walled and solid metal applications. Featuring welded tungsten carbide teeth (TCT), these blades are suitable for cutting hard materials such as steel, stainless, reinforcing bars and cast iron. They are also suitable for cutting high strength steels used in bolts, screws and vehicle panels along with abrasive plastics and metal reinforced rubbers.

- Tungsten Carbide Teeth – For faster cutting speeds and longer blade life
- Highly Stable Body – 25mm (1") blade body provides stable, smooth and clean cuts

Discount Group: C0502

Carbide Teeth		CUT TYPE						
Thickness	Clean	Fast	Straight					
				4.0-12.0mm	Rough	Plunge	Curved	Steel
O/A Length	Cut Length	Tooth Pitch	Blade Thickness	Blade Height	Blade Material	Qty	Item #	Barcode
150	130	8 TPI	1.5	25	Carbide Teeth	1	H539 15008	9311963631721
225	205	8 TPI	1.5	25	Carbide Teeth	1	H539 22508	9311963631738

PROSERIES



H506 Demolition Reciprocating Blade, Wood, Hypercut

Special thick and robust blade designed for demolition work in wood. Suitable for cutting hard wood and soft wood.

- Heavy Duty thick, rigid body resists bending and fracturing for maximum durability
- Made from Cobalt Bi-Metal HSS for flexibility, heat and break-resistance, lasting up to 10X longer than high carbon steel blades
- Teeth milled and side set for straight, fast, rough cutting
- Taper back design for plunge cutting and easier start in hard-to-reach applications

Discount Group: C0502

Demolition		CUT TYPE						
Thickness	Clean	Fast	Straight					
				H506 15006 <100mm	H506 22506 <175mm	H506 30006 <250mm	Soft Wood	Hard Wood
O/A Length	Cut Length	Tooth Pitch	Blade Thickness	Blade Height	Blade Material	Qty	Item #	Barcode
150	130	6 TPI	1.57	22	Cobalt Bi-Metal	2 Pack	H506 15006	9311963599212
225	205	6 TPI	1.57	22	Cobalt Bi-Metal	2 Pack	H506 22506	9311963599229
300	280	6 TPI	1.57	22	Cobalt Bi-Metal	2 Pack	H506 30006	9311963599236

PROSERIES



H507 Demolition Reciprocating Blade, Fire & Rescue, Hypercut

Special thick and robust blade designed for fire and rescue and demolition work. Suitable for cutting wood and nails, and all kinds of timber construction.

- Heavy Duty thick, rigid body resists bending and fracturing for maximum durability
- Made from Cobalt Bi-Metal HSS for flexibility, heat and break-resistance, lasting up to 10X longer than high carbon steel blades
- Increased tang angle for optimal speed and cutting performance
- Teeth milled and side set for straight, fast, rough cutting
- Taper back design for plunge cutting and easier start in hard-to-reach applications

Discount Group: C0502

Fire & Rescue Demolition		CUT TYPE						
Thickness	Clean	Fast	Straight					
				H507 22508 <175mm	H507 30008 <300mm	Wood & Nails	Soft Wood	Pallet
O/A Length	Cut Length	Tooth Pitch	Blade Thickness	Blade Height	Blade Material	Qty	Item #	Barcode
225	205	5-8 TPI	1.57	22	Cobalt Bi-Metal	2 Pack	H507 22508	9311963599243
300	280	5-8 TPI	1.57	22	Cobalt Bi-Metal	2 Pack	H507 30008	9311963599250



H525 Wood Reciprocating Blade, Green Wood

Coarse pitch, diagonally sharpened blade for rough cuts in green wood. Suitable for cutting timber and green wood.

- Made from alloyed tool steel. A flexible blade for cutting soft materials
- Teeth milled, side set and diagonally sharpened

Discount Group: C0502

			CUT TYPE					
			Thickness	Clean	Fast	Straight		
			H525 15003 <100mm					
			H525 22503 <175mm	Rough	Plunge	Curved		
O/A Length	Cut Length	Tooth Pitch	Blade Thickness	Blade Height	Blade Material	Qty	Item #	Barcode
150	130	3 TPI	1.27	19	HCS	2 Pack	H525 15003	9311963598970
225	205	3 TPI	1.27	19	HCS	2 Pack	H525 22503	9311963598987



H520 Wood Reciprocating Blade, Power Curve

Flexible, general purpose blade for fast cuts in wood. Suitable for cutting timber, soft wood and hard wood.

- Curved blade design allows higher tooth engagement resulting in 30% faster, more efficient and effective cuts
- Power Curve supports the orbital movement of the reciprocating saw allowing high power transfer and longer battery life
- Increased tang angle for optimal speed and cutting performance
- Made from alloyed tool steel. A flexible blade for cutting soft materials
- Teeth milled and side set for straight, fast cutting

Discount Group: C0502

			CUT TYPE					
			Thickness	Clean	Fast	Straight		
			<175mm	Rough	Plunge	Curved		
O/A Length	Cut Length	Tooth Pitch	Blade Thickness	Blade Height	Blade Material	Qty	Item #	Barcode
225	205	4 TPI	1.05	19	HCS	2 Pack	H520 22504	9311963598963



H521 Wood Reciprocating Blade, General Purpose

Flexible, general purpose blade for cutting wood. Suitable for cutting timber, soft wood and hard wood.

- Made from alloyed tool steel. A flexible blade for cutting soft materials
- Teeth milled and side set for straight, fast, rough cutting

Discount Group: C0502

			CUT TYPE					
			Thickness	Clean	Fast	Straight		
			<100mm	Rough	Plunge	Curved		
O/A Length	Cut Length	Tooth Pitch	Blade Thickness	Blade Height	Blade Material	Qty	Item #	Barcode
150	130	4 TPI	1.05	19	HCS	2 Pack	H521 15004	9311963598956



H524 Wood Reciprocating Blade, Curved Cut

Flexible blade designed for clean cuts in wood. Suitable for cutting timber, soft wood and hard wood.

- Made from alloyed tool steel. A flexible blade for cutting soft materials
- Teeth triply sharpened for finer cutting in wood

Discount Group: C0502

Clean Cut		Curved Cut		CUT TYPE				Soft Wood Hard Wood	
		Thickness	Clean	Fast	Straight				
		<190mm	●	●	○				
			Rough	Plunge	Curved				
O/A Length	Cut Length	Tooth Pitch	Blade Thickness	Blade Height	Blade Material	Qty	Item #	Barcode	
240	220	6 TPI	1.27	19	HCS	2 Pack	H524 24006	9311963598918	



Blade shown at 50% actual size

H522 Wood Reciprocating Blade, Plunge Cut

Flexible plunge cutting blade designed for fast cuts in wood. Suitable for cutting timber, soft wood, hard wood, PVC plastics and plasterboard.

- Made from alloyed tool steel. A flexible blade for cutting soft materials
- Teeth milled and side set for straight, fast, rough cutting
- Taper back design for plunge cutting and easier start in hard-to-reach applications

Discount Group: C0502

Plunge Cut		CUT TYPE				Soft Wood Hard Wood PVC Plastic Plaster Board			
		Thickness	Clean	Fast	Straight				
		6-100mm	○	●	○				
			Rough	Plunge	Curved				
O/A Length	Cut Length	Tooth Pitch	Blade Thickness	Blade Height	Blade Material	Qty	Item #	Barcode	
300	280	6 TPI	1.27	19	HCS	2 Pack	H522 30006	9311963598888	



Blade shown at 50% actual size

H523 Wood Reciprocating Blade, Plunge Cut

Flexible plunge cutting blade designed for fast cuts in wood and fibre glass. Suitable for cutting timber, soft wood, hard wood, PVC plastics and fibreglass.

- Made from Cobalt Bi-Metal HSS for flexibility, heat and break-resistance, lasting up to 10X longer than high carbon steel blades
- Teeth milled and side set for straight, fast, rough cutting
- Taper back design for plunge cutting and easier start in hard-to-reach applications

Discount Group: C0502

Plunge Cut		CUT TYPE				Soft Wood Hard Wood PVC Plastic Fibreglass Carbon Fibre				
		Thickness	Clean	Fast	Straight					
		H523 15006 <100mm	○	●	○					
		H523 30006 <250mm	Rough	Plunge	Curved					
O/A Length	Cut Length	Tooth Pitch	Blade Thickness	Blade Height	Blade Material	Qty	Item #	Barcode		
150	130	6 TPI	1.27	19	Cobalt Bi-Metal	2 Pack	H523 15006	9311963598895		
300	280	6 TPI	1.27	19	Cobalt Bi-Metal	2 Pack	H523 30006	9311963598901		



Blade shown at 50% actual size

H527 Wood & Nails Reciprocating Blade, Plunge Cut

Robust vari-pitch blade with taper back design for plunge cutting in wood and nails. Suitable for cutting wood and nails and timber.

- Made from Cobalt Bi-Metal HSS for flexibility, heat and break-resistance, lasting up to 10X longer than high carbon steel blades
- Teeth milled and side set for straight, fast, rough cutting
- Variable pitch cuts nails with reduced vibration
- Taper back design for plunge cutting and easier start in hard-to-reach applications

Discount Group: C0502

Plunge Cut			CUT TYPE							
			Thickness	Clean	Fast	Straight				
			<250mm		○	○				
					○	●				
O/A Length	Cut Length	Tooth Pitch	Blade Thickness	Blade Height	Blade Material	Qty	Item #	Barcode		
300	280	5-8 TPI	1.27	19	Cobalt Bi-Metal	2 Pack	H527 30008	9311963599038		



H528 Specialty Reciprocating Blade, Pallet Repair

Special vari-pitch blade designed for pallet repair. Suitable for cutting wood and nails, timber and steel (>2.5mm).

- Thin kerf for flexibility and speed
- Made from Cobalt Bi-Metal HSS for flexibility, heat and break-resistance, lasting up to 10X longer than high carbon steel blades
- Teeth milled and side set for straight, fast, rough cutting
- Variable pitch for universal use and reduced vibration

Discount Group: C0502

COBALT BI-METAL			CUT TYPE								
			Thickness	Clean	Fast	Straight					
			>2.5mm		○	○					
					○	●					
O/A Length	Cut Length	Tooth Pitch	Blade Thickness	Blade Height	Blade Material	Qty	Item #	Barcode			
225	205	10-14 TPI	0.9	19	Cobalt Bi-Metal	2 Pack	H528 22514	9311963598994			
280	260	10-14 TPI	0.9	19	Cobalt Bi-Metal	2 Pack	H528 28014	9311963599007			



H526 Wood & Nails Reciprocating Blade

Straight cutting blade specially designed for pallet repair. Suitable for cutting wood and nails, timber and steel (>2.5mm).

- Made from Cobalt Bi-Metal HSS for flexibility, heat and break-resistance, lasting up to 10X longer than high carbon steel blades
- Teeth milled and wavy set for straight, fine cuts
- Variable pitch cuts nails with reduced vibration

Discount Group: C0502

COBALT BI-METAL			CUT TYPE								
			Thickness	Clean	Fast	Straight					
			>2.5mm		○	○					
					○	●					
O/A Length	Cut Length	Tooth Pitch	Blade Thickness	Blade Height	Blade Material	Qty	Item #	Barcode			
150	130	10-14 TPI	1.27	19	Cobalt Bi-Metal	2 Pack	H526 15014	9311963599014			
225	205	10-14 TPI	1.27	19	Cobalt Bi-Metal	2 Pack	H526 22514	9311963599021			



H529 Specialty Reciprocating Blade, Tree Pruning

Special induction hardened and diagonally sharpened blade designed for fast cuts in green wood. Suitable for cutting green wood and hard wood.

- Made from alloyed tool steel. A flexible blade for cutting soft materials
- Induction hardened blade edge for durability
- Teeth side set and diagonally sharpened for fast, clean cuts

Discount Group: C0502

			CUT TYPE					
			Thickness	Clean	Fast	Straight		
			<190mm	○	●			
				Rough	Plunge	Curved		
O/A Length	Cut Length	Tooth Pitch	Blade Thickness	Blade Height	Blade Material	Qty	Item #	Barcode
240	220	4-5 TPI	1.27	19	HCS	2 Pack	H529 24005	9311963598949



H536 Wood Reciprocating Blade, Pruning

Special induction hardened and conically ground blade designed for fast cuts in green wood. Suitable for pruning and gardening as well for right-angled cuts in wooden bars (<210mm).

- Made from alloyed tool steel. A flexible blade for cutting soft materials hard pointed for extreme sharpness
- Induction hardened blade edge for durability
- Triple precision ground teeth and

Discount Group: C0502

			CUT TYPE					
			Thickness	Clean	Fast	Straight		
			<210mm	○	●			
				Rough	Plunge	Curved		
O/A Length	Cut Length	Tooth Pitch	Blade Thickness	Blade Height	Blade Material	Qty	Item #	Barcode
275	250	6 TPI	1.6	34	HCS	1	H536 25006	9311963621180



Blade shown at 50% actual size

H530 Specialty Reciprocating Blade, Plasterboard

Flexible blade designed for fast cuts in plasterboard and wood. Suitable for cutting timber, soft wood, hard wood and plasterboard.

- Made from alloyed tool steel. A flexible blade for cutting soft materials
- Teeth milled and side set for straight, fast, rough cutting

Discount Group: C0502

			CUT TYPE					
			Thickness	Clean	Fast	Straight		
			H530 15006 6-100mm	○	●			
			H530 30006 6-250mm	Rough	Plunge	Curved		
O/A Length	Cut Length	Tooth Pitch	Blade Thickness	Blade Height	Blade Material	Qty	Item #	Barcode
150	130	6 TPI	1.05	19	HCS	2 Pack	H530 15006	9311963598925
300	280	6 TPI	1.05	19	HCS	2 Pack	H530 30006	9311963598932



PROSERIES



Blade shown at 100% actual size

H531 Specialty Reciprocating Blade, Stainless Steel

Tungsten Carbide Tipped (TCT) blade for specialised applications. Suitable for cutting stainless steel, steel, acrylic, fibreglass and carbon fibre (2.0–4.0mm).

- Tungsten carbide strip with ground straight taper set teeth for high wear resistance when cutting tough, abrasive materials
- Ground to a sharper edge for excellent wear resistance

Discount Group: C0502

O/A Length	Cut Length	Tooth Pitch	Blade Thickness	Blade Height	Blade Material	Qty	Item #	Barcode
115	95	18 TPI	1.25	19	TCT	2 Pack	H531 11518	9311963599359



PROSERIES

Blade shown at 70% actual size

H532 Specialty Reciprocating Blade, Fibreglass

Tungsten Carbide Tipped (TCT) blade for specialised applications. Suitable for cutting hard wood, soft wood, MDF, fibreglass and hebel.

- Made from alloyed tool steel with tungsten carbide teeth for high wear resistance when cutting abrasive materials
- Heavy Duty thick, rigid body resists bending and fracturing for maximum durability

Discount Group: C0502

O/A Length	Cut Length	Tooth Pitch	Blade Thickness	Blade Height	Blade Material	Qty	Item #	Barcode
225	205	3 TPI	1.3	19	TCT	1 Pack	H532 22503	9311963599335
300	280	3 TPI	1.3	19	TCT	1 Pack	H532 30003	9311963599342



Blade shown at 50% actual size

H534 Specialty Reciprocating Blade, Insulation

Special designed blade for installing insulation. The highly sharp edge and double ground wave blade allows a fast, precise and smooth cutting action. Suitable for cutting rock wool insulation, polystyrene, leather, rubber, paper and carpet (<250mm).

- Double wave blade design for cutting without ripping or snagging
- Specially sharp-edged and double ground blade allows a fast, precise and nearly abrasive-free cutting action
- Made from alloyed tool steel. A flexible blade for cutting soft materials

Discount Group: C0502

O/A Length	Cut Length	Tooth Pitch	Blade Thickness	Blade Height	Blade Material	Qty	Item #	Barcode
300	280	3 TPI	1.27	19	HCS	2 Pack	H534 30000	9311963599328



PROSERIES



Blade shown at 70% actual size

H533 Specialty Reciprocating Blade, Masonry

High performance abrasive blade for cutting tough materials that resist chip forming. Carbide grit blades provide fast smooth cuts. Suitable for cutting cast iron, steel pipes, fibreglass, ceramics, cement sheet, hebel and brick (<175mm).

- Tungsten carbide grit cutting edge resists material binding
- Abrasive blade with smooth cutting action

Discount Group: C0502

Carbide Grit Smooth Cut		CUT TYPE				Cast Iron Metal Pipe Fibreglass Brick Cement Sheet				
O/A Length	Cut Length	Tooth Pitch	Thickness	Clean	Fast	Straight	Item #	Barcode		
			<175mm	Rough	Plunge	Curved				
230	210	10-14 TPI	1.05	19	Carbide Grit	2 Pack	H533 23000	9311963599366		



Blade shown at 50% actual size

H540 Specialty Reciprocating Blade, Abrasive Materials & Masonry

These blades are the ultimate cutting solution for abrasive material applications. Featuring welded tungsten carbide teeth (TCT), these blades are suitable for cutting fibre cement, aerated concrete, clay bricks and other abrasive building materials.

- Extra Tall Blade Body – The 50mm (2") design delivers straight cuts
- Large Tooth Gullets – Improves dust removal for faster cutting speeds

Discount Group: C0502

Carbide Teeth		CUT TYPE				Aerated Concrete Fibre Cement Cement Sheet				
O/A Length	Cut Length	Tooth Pitch	Thickness	Clean	Fast	Straight	Item #	Barcode		
			<175mm	Rough	Plunge	Curved				
305	285	2 TPI	1.7	50	Carbide Teeth	1	H540 30502	9311963631745		
455	435	2 TPI	1.7	50	Carbide Teeth	1	H540 45502	9311963631752		

Saw Blades Reciprocating – Brand Equivalent



Power Tool Suitability

Reciprocating saw blades are available with a 1/2" universal shank and are suitable for the following power tools:

AEG Black & Decker, Bosch, De Walt, Hitachi, Makita, Metabo, Milwaukee, Ozito, Ryobi.



SUTTON TOOLS	BRAND EQUIVALENT LIST						
	AEG	BOSCH	DEWALT	LENOX	MAKITA	METABO	MILWAUKEE
H505 15010	373247	S920CF	-	-	P46969	31992	48-00-5700
H505 22510	-	S1120CF	-	960R	P46975	31993	48-00-5705
H505 30010	-	-	-	-	P46981	-	48-00-5710
H506 15006	373243	S610DF	DW4862	6066R	P47036	31925	48-00-5021
H506 22506	373244	S1110DF	DW4863	966R	P47042	31926	48-00-5026
H506 30006	-	-	DW4860	106R	P47058	-	48-00-5027
H507 22508	-	-	-	-	-	-	48-00-5026
H507 30008	-	-	-	-	-	-	48-00-5027
H508 15014	-	-	-	-	-	-	-
H508 22514	-	-	-	-	-	-	-
H509 15014	-	-	-	-	-	-	-
H509 22514	-	-	-	-	-	-	-
H509 30014	-	-	-	-	-	-	-
H510 15005	-	-	-	-	-	-	-
H510 20005	-	-	-	-	-	-	-
H510 24005	-	-	-	-	-	-	-
H510 28005	-	-	-	-	-	-	-
H511 20005	-	-	-	-	-	-	-
H512 15024	354796	S922AF	DW4813	624R	P04905	-	-
H513 15018	-	-	-	6118R	-	-	48-00-5784
H513 22518	-	-	-	9118R	-	-	48-00-5788
H513 30018	-	-	-	12118R	-	-	48-00-5789
H514 15018	-	-	-	21069618GR	-	-	-
H514 22518	-	-	-	21070818GR	-	-	-
H515 15018	354792	S922EF	DW4811	618R	P04880	31454	48-00-5184
H515 20018	354793	S1122EF	DW4821	818R	P04933	31493	-
H516 15008	-	-	-	-	-	-	-
H516 20008	-	-	-	-	-	-	-
H517 15014	-	-	-	210946114GR	-	-	-
H517 22514	-	-	-	210989114GR	-	-	-
H518 15014	354789	S922BF	DW4808	614R	P04911	31491	48-00-5182
H518 20014	361345	-	DW4809	814R	P04927	31494	-
H519 15010	318127	S922HF	DW4806	610R	P46997	-	48-00-5092
H519 20010	-	S1122HF	-	810R	P47008	31932	-
H519 28010	-	-	-	-	P04983	-	-
H520 22504	-	-	-	21062956GR	-	-	-
H521 15004	-	-	-	-	P04999	-	-
H522 30006	323802	S1344D	DW4804	156R	P05016	31472	48-00-1079
H523 15006	354775	S611DF	-	656R	P05088	-	48-00-5035
H523 30006	354778	S1411DF	-	156R	-	-	48-00-5037
H524 24006	-	S2345X	-	-	-	-	-
H525 15003	-	-	-	-	-	-	-
H525 22503	-	S1111K	-	-	-	-	-
H526 15014	-	-	-	-	-	-	-
H526 22514	-	-	-	-	-	-	-
H527 30008	-	-	-	-	-	-	-
H528 22514	-	-	-	-	-	-	-
H528 28014	-	-	-	-	-	-	-
H529 24005	323803	S1531L	-	-	P47117	31488	48-00-1077
H530 15006	354780	S628D	DW4851	-	-	-	48-00-5052
H530 30006	-	-	-	-	-	-	-
H531 11518	-	-	-	-	-	-	-
H532 22503	-	-	-	-	-	-	-
H532 30003	-	-	-	-	-	-	-
H533 23000	373386	S1130Riff	-	100RG	-	31818	-
H534 30000	-	-	-	-	P80444	-	48-00-1084
H535 15013	-	-	-	-	-	-	-
H536 25006	323803	S1531L	-	-	P47117	31488	48-00-1077

JIGSAW BLADES



Wood

Metal

Masonry

Specialty

As a market leading power tools accessory brand and manufacturer, Sutton Tools has invested heavily to continually push the boundaries of its performance and reliability.

Sutton Tools Jigsaw Blades are made in Germany, offering superior performance and durability.

The range includes various blade geometries, tooth patterns and blade material to best suit the type of cut.

To find out more contact Sutton Tools **1800 335 350** cservice@sutton.com.au

Scan to
Watch the demo



sutton®

Saw Blades Jigsaw – Selection Chart



T - Shank	Page Number	U - Shank	Page No.	Wooden Materials										Metals							
				Soft Wood	Hard Wood	Wood & Nails	Chipboard	Plywood	MDF	Green Wood	Sandwich Construction	Window Frame	Steel	Hard Steel	Stainless Steel	Aluminium	Copper & Brass	Cast Iron	Sheet Metal	Metal Pipes	
H430	188	H459	198	●			●	●	○												
H431	188	H460	198	●	●		●	●	○												
H432	188	H461	198	●	●		●	●	○												
H433	189			●			●	●	●												
H434	189			●	●		●	●	○												
H435	189	H462	199	●	●		●	●	○												
H436	190			●	●		●	●	○												
H437	190	H463	199	●	●		●	●	○												
H438	190			●	●		●	●	○												
H439	191			●	●		●	●	○												
H440	191			●	●		●	●	○												
H441	191			●	●		●	●	○	○											
H442	192			●	●		●	●	○												
H443	192			●			●	●	●												
H444	192			●	●		●	●	○												
H445	193					●						●		○	○	●		○			
H446	193					●						○		●	○			●			
H447	193											●		○		●		●			
H448	194	H465	200									●		○		●		●			
H449	194	H466	200									●		●		●		●			
H450	194					●				●		●		●		●		○			
H451	195	H467	200									●		○	●	○					
H452	195											●		●	●						
H453	195											○		●	○						
H454	196									●	●	●		○	○		●	●			
H455	196	H464	199	●			●	●	○												
H456	196											●		○	●		●	●			
H457	197			●	●				●	●											
H458	197															○					
		H468	201											●	○						

● Optimal ○ Effective

Masonry						Specialty Materials							
Masonry	Plaster Board	Compressed Fibre Cement	Cement Sheet	Ceramic Tile	Hebel	PVC Plastics	Acrylic	Leather	Rubber	Fibreglass	Carbon Fibre	Glass	Laminate
						○				○	○		○
						●				○	○		○
						●				○	○		●
						●				○	○		○
						●				○	○		○
						●				○	○		○
						●				○	○		○
													○
													○
													○
						○				○	○		○
						●	●			●	●		●
						○				○	○		○
						●							●
										○	○		●
						○							
		○	○		○	○	○						
						●							○
	●	●	●		●	●	●			●	●		
		○	●	●	●					●	●	●	
						●	●						

Cut Type					
Clean Cut	Rough Cut	Straight Cut	Curved Cut	Plunge Cut	Fast Cut
●			●		
●				●	
●					
●			●	●	
●					
●				●	
●		●		●	
	●				●
	●		●		●
	●	●		●	●
●		●	●	●	
●		●		●	●
●				●	
●					●
●	●				●
●	●				●
●					
●					
●					
●					●
●					
●					
●					
●					
●					
●					
●					
●					
●	●				●
●	●				●
●					●
●					

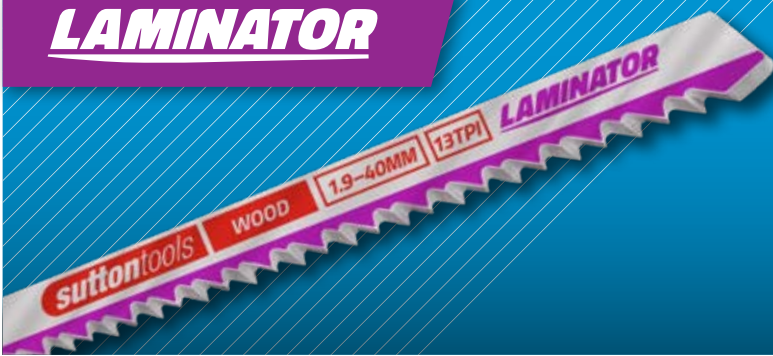


Check out the demo

PROSERIES

Special application premium grade blades are highlighted in purple for the most demanding jobs. The blade that professionals prefer to use.

LAMINATOR



SPLINTER – FREE



Splinter Free
Reverse teeth for very clean and splinter-free surface cut

10X LIFE

Made from Cobalt Bi-metal
Lasting up to 10X longer than carbon steel blades

DOMINATOR



PRECISE CUTS

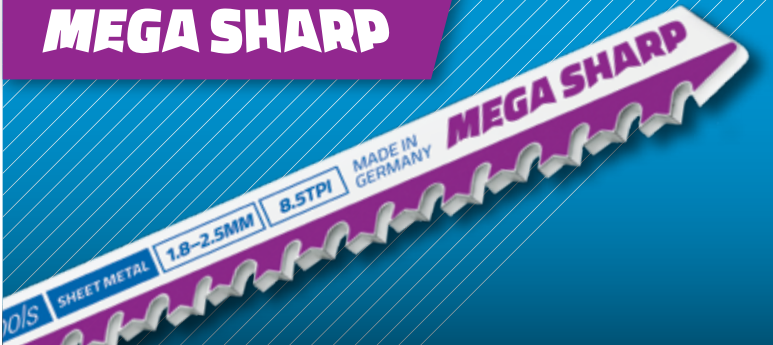


Thick Rigid Body

HEAVY DUTY

Break resistant body for maximum durability

MEGA SHARP



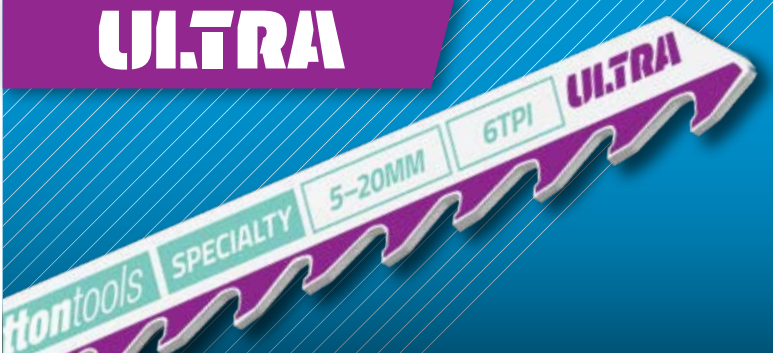
MEGA FAST CLEAN CUTS

2X FASTER

3X LIFE

Patented M-Tooth design cuts on both forward and back stroke for 2X cutting speed and 3X life

ULTRA



ULTRA HARD ULTIMATE STRENGTH

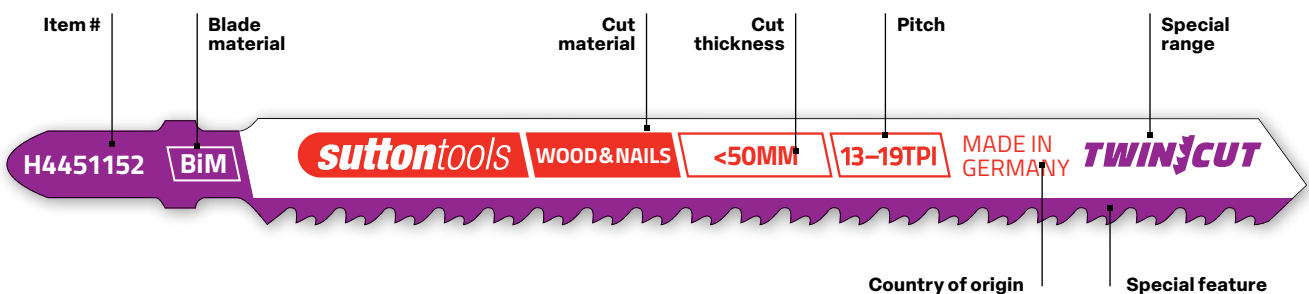


Carbide Tip
Tungsten carbide teeth for high wear resistance when cutting abrasive materials

HEAVY DUTY

Break resistant body for maximum durability

How to read blade information



Saw Blades Jigsaw Sets



T-Shank

Discount Group: C0502



Description	Pieces	Item #	Barcode	List Price
Multi-Purpose Jigsaw Blades Set	5	H490 0005	9311963611044	\$23.82

Contents	O/A Length	Cut Length	Tooth Pitch	Blade Thickness	Cut Thickness	Cut Type						Item #	
						Clean	Fast	Straight	Rough	Plunge	Curved		
H431 Wood	100	75	10 TPI	1.45	3.0 – 30mm	•					•		H431 1002
H437 Wood	100	75	6 TPI	1.27	5.0 – 50mm		•		•				H437 1002
H455 Plastic	100	75	8.5 TPI	1.27	4.0 – 50mm		•		•				H455 1002
H448 Sheet Metal	75	55	21 TPI	1.00	1.2 – 2.0mm	•							H448 0752
H451 Metal	75	55	13 TPI	1.00	2.5 – 6.0mm	•							H451 0752

Ideal for:



Discount Group: C0502



Description	Pieces	Item #	Barcode	List Price
Wood Cutting Jigsaw Blades Set	5	H491 0005	9311963611037	\$19.98

Contents	O/A Length	Cut Length	Tooth Pitch	Blade Thickness	Cut Thickness	Cut Type						Item #	
						Clean	Fast	Straight	Rough	Plunge	Curved		
H431 Wood	100	75	10 TPI	1.45	3.0 – 30mm	•					•		H431 1002
H432 Wood	100	75	10 TPI	1.45	3.0 – 30mm	•							H432 1002
H433 Wood	100	75	10 TPI	1.45	2.5 – 35mm	•				•	•		H433 1002
H437 Wood	100	75	6 TPI	1.27	5.0 – 50mm		•		•				H437 1002
H455 Plastic	100	75	8.5 TPI	1.27	4.0 – 50mm		•		•				H455 1002

Ideal for:



Discount Group: C0502



Description	Pieces	Item #	Barcode	List Price
Metal Cutting Jigsaw Blades Set	5	H492 0005	9311963611020	\$34.14

Contents	O/A Length	Cut Length	Tooth Pitch	Blade Thickness	Cut Thickness	Cut Type						Item #	
						Clean	Fast	Straight	Rough	Plunge	Curved		
H447 Sheet Metal	75	55	36 TPI	1.00	0.5 – 1.5mm	•							H447 0752
H448 Sheet Metal	75	55	21 TPI	1.00	1.2 – 2.0mm	•							H448 0752
H451 Steel	75	55	13 TPI	1.00	2.5 – 6.0mm	•							H451 0752
H452 Stainless Steel	75	55	13 TPI	1.00	2.5 – 6.0mm	•							H452 0752
H453 Aluminium	100	75	8.5 TPI	1.00	3.0 – 30mm								H453 1002

Ideal for:



U-Shank

Discount Group: C0502



Description	Pieces	Item #	Barcode	List Price
Multi-Purpose Jigsaw Blades Set	5	H496 0005	9311963611051	\$20.56

Contents	O/A Length	Cut Length	Tooth Pitch	Blade Thickness	Cut Thickness	Cut Type						Item #	
						Clean	Fast	Straight	Rough	Plunge	Curved		
H460 Wood	100	75	10 TPI	1.27	3.0 – 30mm	•							H460 1002
H463 Wood	100	75	6 TPI	1.27	5.0 – 50mm		•		•				H463 1002
H464 Plastic	100	75	8.5 TPI	1.27	4.0 – 50mm		•		•				H464 1002
H465 Sheet Metal	75	55	21 TPI	1.00	1.2 – 2.0mm	•							H465 0752
H467 Metal	75	55	13 TPI	1.00	2.5 – 6.0mm	•							H467 0752

Ideal for:





sutton



H430 Wood Jigsaw Blade, Curved Clean Cut

Special jigsaw blades with 4.5mm tall body and thin kerf for controlled, curved clean cuts in wood. Suitable for cutting soft wood, plywood, chipboard, MDF and laminate (1.5-15mm).

- 4.5mm tall body and thin kerf increases agility for controlled, curved cuts
- Conically ground blade, teeth diagonally sharpened and tapered for very clean and precise cuts
- Made from alloyed tool steel. A flexible blade for cutting soft materials

Discount Group: C0502

Curved Cut		Clean Cut		CUT TYPE				Material Compatibility	
Thickness	Clean	Fast	Straight	Soft Wood	Plywood	Chipboard	Laminate		
1.5 - 15mm	●								
	Rough	Plunge	Curved						

O/A Length	Cut Length	Tooth Pitch	Blade Thickness	Blade Height	Blade Material	Qty	Item #	Barcode
75	50	19 TPI	1.25	4.5	HCS	2 Pack	H430 0752	9311963610856



H431 Wood Jigsaw Blade, Clean Cut

Clean cutting jigsaw blade for wood. Suitable for cutting soft wood, hard wood, plywood, chipboard, MDF and PVC plastic (3.0-30mm).

- Conically ground blade, teeth diagonally sharpened for very clean and precise cuts
- Made from alloyed tool steel. A flexible blade for cutting soft materials

Discount Group: C0502

Clean Cut		CUT TYPE				Material Compatibility			
Thickness	Clean	Fast	Straight	Soft Wood	Hard Wood	Plywood	PVC Plastic		
3.0 - 30mm	●								
	Rough	Plunge	Curved						

O/A Length	Cut Length	Tooth Pitch	Blade Thickness	Blade Height	Blade Material	Qty	Item #	Barcode
100	75	10 TPI	1.45	7.8	HCS	2 Pack	H431 1002	9311963610740



H432 Wood Jigsaw Blade, Splinter Free

Special jigsaw blades with reverse teeth and conically ground for SPLINTER-FREE surface cuts in wood. Suitable for cutting soft wood, hard wood, plywood, chipboard, MDF, laminate and plastics.

- Reverse teeth for very clean and splinter-free surface cut
- Conically ground blade, teeth diagonally sharpened for very clean and precise cuts
- Made from alloyed tool steel. A flexible blade for cutting soft materials

Discount Group: C0502

Reverse Teeth		Splinter Free		CUT TYPE				Material Compatibility		
Thickness	Clean	Fast	Straight	Soft Wood	Hard Wood	Laminate	PVC Plastic	Plywood		
H432 1002 3.0-30mm	●									
H432 1302 3.0-65mm	Rough	Plunge	Curved							

O/A Length	Cut Length	Tooth Pitch	Blade Thickness	Blade Height	Blade Material	Qty	Item #	Barcode
100	75	10 TPI	1.45	7.8	HCS	2 Pack	H432 1002	9311963610863
130	105	10 TPI	1.45	7.8	HCS	2 Pack	H432 1302	9311963610887

sutton



H433 Wood Jigsaw Blade, Curved Clean Cut - Double Edged

Sutton Tools double edge jigsaw blades are designed for extremely narrow curved cuts. Fine teeth produce clean cuts. Suitable for cutting soft wood, plywood, MDF, chipboard and plastics (2.5-35mm).

- Double Edge blade design allows extremely narrow curved cuts
- Conically ground blade, teeth diagonally sharpened for very clean and precise cuts
- Made from alloyed tool steel. A flexible blade for cutting soft materials

Discount Group: C0502

Double Edged Clean Cut		CUT TYPE				MDF Chipboard Soft Wood PVC Plastic Plywood				
Thickness	Clean	Fast	Straight							
2.5 - 35mm	●	●	●	Rough	Plunge	Curved				
				●	●	●				
O/A Length	Cut Length	Tooth Pitch	Blade Thickness	Blade Height	Blade Material	Qty	Item #	Barcode		
100	75	10 TPI	1.45	6.5	HCS	2 Pack	H433 1002	9311963610832		



H434 Wood Jigsaw Blade, Clean Cut - Long Life

Long life, clean cutting jigsaw blade for wood. Suitable for cutting soft wood, hard wood, plywood, chipboard, MDF and PVC plastic (8.0-40mm).

- Conically ground blade, teeth diagonally sharpened for very clean and precise cuts
- Made from Cobalt Bi-Metal HSS for flexibility, heat and break-resistance, lasting up to 10X longer than high carbon steel blades

Discount Group: C0502

Clean Cut 10X LIFE		CUT TYPE				Soft Wood Hard Wood Plywood PVC Plastics				
Thickness	Clean	Fast	Straight							
8.0 - 40mm	●	●	●	Rough	Plunge	Curved				
				●	●	●				
O/A Length	Cut Length	Tooth Pitch	Blade Thickness	Blade Height	Blade Material	Qty	Item #	Barcode		
100	75	8.5 TPI	1.27	7.8	Cobalt Bi-Metal	2 Pack	H434 1002	9311963610733		



H435 Wood Jigsaw Blade, Clean Cut

Clean cutting jigsaw blade for wood. Suitable for cutting soft wood, hard wood, plywood, chipboard, MDF and PVC plastic (10-45mm).

- Conically ground blade, teeth diagonally sharpened for very clean and precise cuts
- Made from alloyed tool steel. A flexible blade for cutting soft materials

Discount Group: C0502

Clean Cut		CUT TYPE				Soft Wood Hard Wood Plywood PVC Plastic				
Thickness	Clean	Fast	Straight							
10 - 45mm	●	●	●	Rough	Plunge	Curved				
				●	●	●				
O/A Length	Cut Length	Tooth Pitch	Blade Thickness	Blade Height	Blade Material	Qty	Item #	Barcode		
100	75	6 TPI	1.45	7.8	HCS	2 Pack	H435 1002	9311963610764		



sutton



H436 Wood Jigsaw Blade, Straight Clean Cut

Straight, clean cutting jigsaw blade with heavy duty thick, rigid body to resist bending. Suitable for cutting hard wood, soft wood, plywood, MDF, chipboard and PVC plastic (10-45mm).

- Heavy Duty, thick, rigid body resists bending and fracturing for maximum durability.
- Conically ground blade, teeth diagonally sharpened for very clean and precise cuts
- Made from alloyed tool steel. A flexible blade for cutting soft materials

Discount Group: C0502

Straight Out		Clean Cut		CUT TYPE				Soft Wood		Hard Wood		Chipboard		PVC Plastic	
				Thickness	Clean	Fast	Straight								
				10 - 45mm	●	●	●								
					Rough	Plunge	Curved								
O/A Length	Cut Length	Tooth Pitch	Blade Thickness	Blade Height	Blade Material	Qty	Item #	Barcode							
100	75	6 TPI	1.68	7.8	HCS	2 Pack	H436 1002	9311963610825							



H437 Wood Jigsaw Blade, General Purpose

General purpose jigsaw blade for fast cuts in wood. Suitable for cutting timber, soft wood and hard wood.

- Teeth side set and diagonally sharpened for fast, rough cuts
- Made from alloyed tool steel. A flexible blade for cutting soft materials

Discount Group: C0502

Fast Cut		CUT TYPE				Soft Wood		Hard Wood		Plywood		Chipboard	
		Thickness	Clean	Fast	Straight								
		H437 1002 5 - 50mm	●	●	●								
		H437 1302 5 - 80mm	Rough	Plunge	Curved								
O/A Length	Cut Length	Tooth Pitch	Blade Thickness	Blade Height	Blade Material	Qty	Item #	Barcode					
100	75	6 TPI	1.27	7.8	HCS	2 Pack	H437 1002	9311963610818					
130	105	6 TPI	1.27	7.8	HCS	2 Pack	H437 1302	9311963610795					



H438 Wood Jigsaw Blade, Double Edge

Sutton Tools double edge jigsaw blades are designed for extremely narrow curved cuts. Coarse teeth produce fast rough cuts. Suitable for cutting hard wood, soft wood, plywood, MDF and chipboard (5.0-50mm).

- Double Edge blade design allows extremely narrow curved cuts
- Teeth side set and diagonally sharpened for fast, rough cuts
- Made from alloyed tool steel. A flexible blade for cutting soft materials

Discount Group: C0502

Double Edged		Fast Cut		CUT TYPE				Soft Wood		Hard Wood		Plywood		Chipboard	
				Thickness	Clean	Fast	Straight								
				5.0 - 50mm	●	●	●								
					Rough	Plunge	Curved								
O/A Length	Cut Length	Tooth Pitch	Blade Thickness	Blade Height	Blade Material	Qty	Item #	Barcode							
100	75	6 TPI	1.27	6.5	HCS	2 Pack	H438 1002	9311963610849							

sutton



H439 Wood Jigsaw Blade, Straight Fast Cut

Straight cutting general purpose jigsaw blade with heavy duty thick, rigid body to resist bending. Suitable for cutting hard wood, soft wood, plywood, MDF and chipboard (5.0-50mm).

- Heavy Duty thick, rigid body resists bending and fracturing for maximum durability
- Teeth side set and diagonally sharpened for fast, rough cuts
- Made from alloyed tool steel. A flexible blade for cutting soft materials

Discount Group: C0502

Straight Cut		Fast Cut		CUT TYPE				Material Compatibility			
				Thickness	Clean	Fast	Straight				
				10 - 50mm	Rough	Plunge	Curved	Soft Wood, Hard Wood, Plywood, Chipboard			
O/A Length	Cut Length	Tooth Pitch	Blade Thickness	Blade Height	Blade Material	Qty	Item #	Barcode			
100	75	6 TPI	1.68	7.8	HCS	2 Pack	H439 1002	9311963610900			

PROSERIES



H440 Wood Jigsaw Blade, Precision Square/Radius Cut - Dominator

Sutton Tools Dominator jigsaw blades are a high performance blade with an heavy duty rigid body for extremely precise square cuts and narrow radius in wood. Suitable for cutting hard wood, soft wood, plywood, chipboard and MDF (<50mm).

- Heavy Duty thick, rigid body resists bending for greater control and accuracy
- Conically ground blade, teeth diagonally sharpened for very clean and precise cuts
- Made from Cobalt Bi-Metal HSS for flexibility, heat and break-resistance, lasting up to 10X longer than high carbon steel blades

Discount Group: C0502

Straight Cut		10X LIFE		HEAVY DUTY		CUT TYPE				Material Compatibility			
						Thickness	Clean	Fast	Straight				
						< 50mm	Rough	Plunge	Curved	Soft Wood, Hard Wood, Chipboard, Plywood			
O/A Length	Cut Length	Tooth Pitch	Blade Thickness	Blade Height	Blade Material	Qty	Item #	Barcode					
100	75	6 TPI	2.5	8	Cobalt Bi-Metal	2 Pack	H440 1002	9311963610894					



H441 Wood Jigsaw Blade, Extra Fine Cut

Special triple-sharpened jigsaw blade for very fine, fast cuts in wood and plastics. Suitable for cutting hard wood, soft wood, plywood, MDF, chipboard and PVC plastic, acrylic, fibreglass and laminate (3.0-60mm).

- Teeth triply sharpened for extra-fine cutting in wood and plastics
- Conically ground blade, teeth diagonally sharpened for very clean and precise cuts
- Made from alloyed tool steel. A flexible blade for cutting soft materials

Discount Group: C0502

Straight Cut		Clean Cut		CUT TYPE				Material Compatibility				
				Thickness	Clean	Fast	Straight					
				3.0 - 60mm	Rough	Plunge	Curved	Soft Wood, Hard Wood, Laminate, Acrylic, PVC Plastic				
O/A Length	Cut Length	Tooth Pitch	Blade Thickness	Blade Height	Blade Material	Qty	Item #	Barcode				
115	90	10 TPI	1.45	10	HCS	2 Pack	H441 1152	9311963610771				



sutton



H442 Wood Jigsaw Blade, Clean Cut

Clean cutting jigsaw blade for wood. Suitable for cutting soft wood, hard wood, plywood, chipboard, MDF and PVC plastic (8.0-65mm).

- Conically ground blade, teeth diagonally sharpened for very clean and precise cuts
- Made from alloyed tool steel. A flexible blade for cutting soft materials

Discount Group: C0502

Clean Cut		CUT TYPE								
		Thickness	Clean	Fast	Straight					
		8.0 – 65mm	●	●						
		Rough		Plunge	Curved					
			●	●						
O/A Length	Cut Length	Tooth Pitch	Blade Thickness	Blade Height	Blade Material	Qty	Item #	Barcode		
130	105	8.5 TPI	1.45	7.8	HCS	2 Pack	H442 1302	9311963610788		

PROSERIES



H443 Wood Jigsaw Blade, Laminate

Sutton Tools Laminator jigsaw blades are a high performance blade with reverse teeth and conically ground for SPLINTER-FREE, fast, precise cuts in laminated board. Suitable for cutting laminate, soft wood, plywood, chipboard, MDF and plastics (1.9-40mm).

- Reverse teeth for very clean and splinter-free surface cut
- Conically ground blade, teeth diagonally sharpened for very clean and precise cuts
- Made from alloyed tool steel. A flexible blade for cutting soft materials

Discount Group: C0502

Reverse Teeth Splinter Free		CUT TYPE									
		Thickness	Clean	Fast	Straight						
		1.9 – 40mm	●	●							
		Rough		Plunge	Curved						
			●	●							
O/A Length	Cut Length	Tooth Pitch	Blade Thickness	Blade Height	Blade Material	Qty	Item #	Barcode			
115	90	13 TPI	1.45	10	HCS	2 Pack	H443 1152	9311963610870			

PROSERIES



H444 Wood Jigsaw Blade, Laminate – Long Life

Sutton Tools Laminator jigsaw blades are a high performance blade with reverse teeth and conically ground for SPLINTER-FREE, fast, precise cuts in laminated board. Suitable for cutting laminate, hard wood, soft wood, plywood, chipboard and MDF (2.5-20mm).

- Reverse teeth for very clean and splinter-free surface cut
- Conically ground blade, teeth diagonally sharpened for very clean and precise cuts
- Made from Cobalt Bi-Metal HSS for flexibility, heat and break-resistance, lasting up to 10X longer than high carbon steel blades

Discount Group: C0502

Reverse Teeth Splinter Free 10X LIFE			CUT TYPE								
			Thickness	Clean	Fast	Straight					
			2.5 – 20mm	●	●						
			Rough		Plunge	Curved					
				●	●						
O/A Length	Cut Length	Tooth Pitch	Blade Thickness	Blade Height	Blade Material	Qty	Item #	Barcode			
80	55	13 TPI	1.27	7.9	Cobalt Bi-Metal	2 Pack	H444 0802	9311963610603			



H445 Wood & Nails Jigsaw Blade, Twin Cut - Long Life (<50mm)

These flexible jigsaw blades from Sutton Tools feature an innovative Twin-Cut tooth geometry designed to reduce tooth breakage and increase blade life when cutting metal. Suitable for cutting steel, copper, stainless steel, aluminium, metal pipe (2.5-10mm) and wood and nails (<50mm).

- Twin-Cut geometry reduces tooth breakage, combining speed and durability
- Variable pitch cuts nails with reduced vibration
- Teeth milled and side set for straight, fast, rough cutting
- Made from Cobalt Bi-Metal HSS for flexibility, heat and break-resistance, lasting up to 10X longer than high carbon steel blades

Discount Group: C0502

Twin Cut		10X LIFE		CUT TYPE			Wood & Nails		Steel		Copper & Brass	
		Thickness		Clean	Fast	Straight						
		Wood & Nails <50mm		●	●							
		Steel 2.5 - 10mm		Rough	Plunge	Curved						
		●										
O/A Length	Cut Length	Tooth Pitch	Blade Thickness	Blade Height	Blade Material	Qty	Item #	Barcode				
115	90	13-19 TPI	1.0	9.8	Cobalt Bi-Metal	2 Pack	H445 1152	9311963610719				



H446 Wood & Nails Jigsaw Blade, Twin Cut - Long Life (<80mm)

These flexible jigsaw blades from Sutton Tools feature an innovative Twin-Cut tooth geometry designed to reduce tooth breakage and increase blade life when cutting metal. Suitable for cutting aluminium, steel, copper, metal pipe (2.5-10mm) and wood and nails (<80mm).

- Twin-Cut geometry reduces tooth breakage, combining speed and durability
- Variable pitch cuts nails with reduced vibration
- Teeth milled and side set for straight, fast, rough cutting
- Made from Cobalt Bi-Metal HSS for flexibility, heat and break-resistance, lasting up to 10X longer than high carbon steel blades

Discount Group: C0502

Twin Cut		10X LIFE		CUT TYPE			Wood & Nails		Aluminium		Metal Pipe	
		Thickness		Clean	Fast	Straight						
		Wood & Nails <80mm		●	●							
		Steel 2.5 - 10mm		Rough	Plunge	Curved						
		●										
O/A Length	Cut Length	Tooth Pitch	Blade Thickness	Blade Height	Blade Material	Qty	Item #	Barcode				
130	90	14-10 TPI	1.0	9.8	Cobalt Bi-Metal	2 Pack	H446 1302	9311963610696				



H447 Sheet Metal Jigsaw Blade, General Purpose

Finely toothed jigsaw blade for clean cuts in thin sheet metal. Suitable for cutting steel, stainless steel and copper (0.5-1.5mm).

- Teeth milled and wavy set for fine, clean cuts
- Made from hardened High Speed Steel for cutting metals

Discount Group: C0502

Twin Cut		10X LIFE		CUT TYPE			Sheet Metal		Steel		Copper & Brass	
		Thickness		Clean	Fast	Straight						
		0.5 - 1.5mm		●	●							
				Rough	Plunge	Curved						
		●										
O/A Length	Cut Length	Tooth Pitch	Blade Thickness	Blade Height	Blade Material	Qty	Item #	Barcode				
75	55	36 TPI	1.0	7.8	HSS	2 Pack	H447 0752	9311963610665				



sutton



H448 Sheet Metal Jigsaw Blade, General Purpose

General purpose jigsaw blade for clean cuts in sheet metal. Suitable for cutting steel, copper and brass (1.2–2.0mm).

- Teeth milled and wavy set for fine, clean cuts
- Made from hardened High Speed Steel for cutting metals

Discount Group: C0502

		CUT TYPE						
		Thickness	Clean	Fast	Straight			
		1.2 – 2.0mm	●					
			Rough	Plunge	Curved			
O/A Length	Cut Length	Tooth Pitch	Blade Thickness	Blade Height	Blade Material	Qty	Item #	Barcode
75	55	21 TPI	1.0	7.8	HSS	2 Pack	H448 0752	9311963610672



H449 Sheet Metal Jigsaw Blade, Long Life

Flexible, long life, general purpose jigsaw blade for clean cuts in sheet metal. Suitable for cutting steel, stainless steel and copper (1.2–2.0mm).

- Teeth milled and wavy set for fine, clean cuts
- Made from Cobalt Bi-Metal HSS for flexibility, heat and break-resistance, lasting up to 10X longer than high carbon steel blades

Discount Group: C0502

		CUT TYPE						
		Thickness	Clean	Fast	Straight			
		1.2 – 2.0mm	●					
			Rough	Plunge	Curved			
O/A Length	Cut Length	Tooth Pitch	Blade Thickness	Blade Height	Blade Material	Qty	Item #	Barcode
75	55	21 TPI	1.0	7.8	Cobalt Bi-Metal	2 Pack	H449 0752	9311963610610



PROSERIES

H450 Sheet Metal Jigsaw Blade, Megasharp

Sutton Tools Mega Sharp jigsaw blades are a high performance blade with patented M-tooth geometry designed to cut on both forward and back stroke whilst minimising tooth breakage and increasing blade life. Superior results can be achieved at the highest machine speed settings for very fast, clean cuts in metal. Suitable for cutting steel, copper (1.8-2.5mm), wood and nails and PVC plastics.

- Patented M-Tooth design cuts on both forward and back stroke for 2X cutting speed and 3X life
- Made from Cobalt Bi-Metal HSS for flexibility, heat and break-resistance, lasting up to 10X longer than high carbon steel blades

Discount Group: C0502

		CUT TYPE						
		Thickness	Clean	Fast	Straight			
		1.8 – 2.5mm	●	●				
			Rough	Plunge	Curved			
O/A Length	Cut Length	Tooth Pitch	Blade Thickness	Blade Height	Blade Material	Qty	Item #	Barcode
130	105	8.5 TPI	1.27	9.6	Cobalt Bi-Metal	2 Pack	H450 1302	9311963610702



sutton






H451 Metal Jigsaw Blade, General Purpose

General purpose jigsaw blade for cutting metal. Suitable for cutting steel, non-ferrous metal and aluminium (2.5–6.0mm).

- Teeth milled and wavy set for fine, clean cuts
- Made from hardened High Speed Steel for cutting hard materials like metal, aluminium and non-ferrous metal

Discount Group: C0502

		CUT TYPE						
		Thickness	Clean	Fast	Straight			
		2.5 – 6.0mm	●					
			Rough	Plunge	Curved			
O/A Length	Cut Length	Tooth Pitch	Blade Thickness	Blade Height	Blade Material	Qty	Item #	Barcode
75	55	13 TPI	1.0	7.8	HSS	2 Pack	H451 0752	9311963610689







H452 Metal Jigsaw Blade, Long Life

Flexible, general purpose jigsaw blade for cutting metal. Suitable for cutting steel, stainless steel, aluminium and copper (2.5–6.0mm).

- Teeth milled and wavy set for fine, clean cuts
- Made from Cobalt Bi-Metal HSS for flexibility, heat and break-resistance, lasting up to 10X longer than high carbon steel blades

Discount Group: C0502

		CUT TYPE						
		Thickness	Clean	Fast	Straight			
		2.5 – 6.0mm	●					
			Rough	Plunge	Curved			
O/A Length	Cut Length	Tooth Pitch	Blade Thickness	Blade Height	Blade Material	Qty	Item #	Barcode
75	55	13 TPI	1.0	7.8	Cobalt Bi-Metal	2 Pack	H452 0752	9311963610627







H453 Metal Jigsaw Blade, Aluminium

Special jigsaw blade for cutting non-ferrous metals. Suitable for cutting non-ferrous metal and aluminium (3.0–15mm), steel and plastics (3.0–30mm).

- Teeth milled and side set for aluminium cutting
- Made from hardened High Speed Steel for cutting hard materials like metal, aluminium and non-ferrous metal

Discount Group: C0502

		CUT TYPE						
		Thickness	Clean	Fast	Straight			
		Non-ferrous 3-15mm Steel 3-30mm	●					
			Rough	Plunge	Curved			
O/A Length	Cut Length	Tooth Pitch	Blade Thickness	Blade Height	Blade Material	Qty	Item #	Barcode
100	75	8.5 TPI	1.0	7.8	HSS	2 Pack	H453 1002	9311963610726



sutton

PROSERIES



H454 Metal Jigsaw Blades, Profile

Sutton Tools Profile jigsaw blades are a high performance, long and flexible blade for cutting metal profiles. Suitable for cutting steel, aluminium, copper, stainless steel (1.0-3.0mm), pipes and sandwich materials (<80mm).

- Made from Cobalt Bi-Metal HSS for flexibility, heat and break-resistance, lasting up to 10X longer than high carbon steel blades
- Teeth milled and wavy set for fine, clean cuts

Discount Group: C0502

COBALT BI-METAL		CUT TYPE							
		Thickness	Clean	Fast	Straight				
O/A Length	Cut Length	Tooth Pitch	Blade Thickness	Blade Height	Blade Material	Qty	Item #	Barcode	
									Metal 1.0 - 3.0mm
130	105	25 TPI	1.0	9.8	Cobalt Bi-Metal	2 Pack	H454 1302	9311963610634	



H455 Specialty Jigsaw Blade, Plastics

Special jigsaw blade for fast cuts in plastics. Suitable for PVC plastic, soft wood, plywood, MDF and chipboard (4.0-50mm).

- Teeth side set and diagonally sharpened for fast, rough cuts
- Made from alloyed tool steel. A flexible blade for cutting soft materials

Discount Group: C0502

Fast Cut		CUT TYPE							
		Thickness	Clean	Fast	Straight				
O/A Length	Cut Length	Tooth Pitch	Blade Thickness	Blade Height	Blade Material	Qty	Item #	Barcode	
									4.0 - 50mm
100	75	8.5 TPI	1.27	9.8	HCS	2 Pack	H455 1002	9311963610757	

PROSERIES



H456 Specialty Jigsaw Blade, Stainless Steel – TCT Ultra

Sutton Tools Ultra jigsaw blades are a Tungsten Carbide Tipped (TCT) blade for specialised applications. Suitable for cutting stainless steel, steel, acrylic, fibreglass and carbon fibre (1.5-3.0mm).

- Tungsten carbide strip with ground straight taper set teeth for high wear resistance when cutting tough, abrasive materials
- Ground to a sharper edge for excellent wear resistance
- Heavy Duty thick, rigid body resists bending and fracturing for maximum durability

Discount Group: C0502

Carbide Tipped Clean Cut		CUT TYPE							
		Thickness	Clean	Fast	Straight				
O/A Length	Cut Length	Tooth Pitch	Blade Thickness	Blade Height	Blade Material	Qty	Item #	Barcode	
									1.5 - 3.0mm
80	50	23 TPI	2.3	8.8	TCT	2 Pack	H456 0802	9311963610658	



sutton

PROSERIES



H457 Specialty Jigsaw Blade, TCT – Ultra

Sutton Tools Ultra jigsaw blades are a Tungsten Carbide Tipped (TCT) blade for specialised applications. Suitable for cutting hard wood, soft wood, MDF, fibreglass, PVC plastics, cement sheet and hebel (5.0-20mm).

- Made from alloyed tool steel with tungsten carbide teeth for high wear resistance when cutting abrasive materials
- Heavy Duty thick, rigid body resists bending and fracturing for maximum durability

Discount Group: C0502

O/A Length	Cut Length	Tooth Pitch	Blade Thickness	Blade Height	Blade Material	Qty	Item #	Barcode
100	75	6 TPI	1.9	7.8	TCT	1 Pack	H457 1001	9311963610917



H458 Specialty Jigsaw Blade, Carbide Grit – Ultra

Sutton Tools Ultra jigsaw blades are a high performance abrasive blade for cutting tough materials that resist chip forming. Carbide grit blades provide fast smooth cuts. Suitable for cutting ceramics, fibreglass, carbon fibre, glass, cast iron, cement sheet and hebel (5.0-15mm).

- Tungsten carbide grit cutting edge resists material binding
- Abrasive blade with smooth cutting action
- Heavy Duty thick, rigid body resists bending and fracturing for maximum durability

Discount Group: C0502

O/A Length	Cut Length	Tooth Pitch	Blade Thickness	Blade Height	Blade Material	Qty	Item #	Barcode
80	55	-	2.3	8.8	Carbide Grit	1 Pack	H458 0801	9311963610597



H459 Wood Jigsaw Blade, Curved Clean Cut

Special jigsaw blades with 4.5mm tall body and thin kerf for controlled, curved clean cuts in wood. Suitable for cutting soft wood, plywood, chipboard, MDF and laminate (1.5-15mm).

- 4.5mm tall body and thin kerf increases agility for controlled, curved cuts
- Conically ground blade, teeth diagonally sharpened and tapered for very clean and precise cuts
- Made from alloyed tool steel. A flexible blade for cutting soft materials

Discount Group: C0502

O/A Length		Cut Length	Tooth Pitch	Blade Thickness	Blade Height	Blade Material	Qty	Item #	Barcode
75		50	19 TPI	1.25	4.5	HCS	2 Pack	H459 0752	9311963611167



H460 Wood Jigsaw Blade, Clean Cut

Clean cutting jigsaw blade for wood. Suitable for cutting soft wood, hard wood, plywood, chipboard, MDF and PVC plastic (3.0-30mm).

- Conically ground blade, teeth diagonally sharpened for very clean and precise cuts
- Made from alloyed tool steel. A flexible blade for cutting soft materials

Discount Group: C0502

O/A Length		Cut Length	Tooth Pitch	Blade Thickness	Blade Height	Blade Material	Qty	Item #	Barcode
100		75	10 TPI	1.27	7.8	HCS	2 Pack	H460 1002	9311963610979



H461 Wood Jigsaw Blade, Splinter Free Surface

Special jigsaw blades with reverse teeth and conically ground for SPLINTER-FREE surface cuts in wood. Suitable for cutting soft wood, hard wood, plywood, chipboard, MDF, laminate and plastics (3.0-30mm).

- Reverse teeth for very clean and splinter-free surface cut
- Conically ground blade, teeth diagonally sharpened for very clean and precise cuts
- Made from alloyed tool steel. A flexible blade for cutting soft materials

Discount Group: C0502

O/A Length		Cut Length	Tooth Pitch	Blade Thickness	Blade Height	Blade Material	Qty	Item #	Barcode
100		75	10 TPI	1.27	7.8	HCS	2 Pack	H461 1002	9311963611013



H462 Wood Jigsaw Blade, Clean Cut

Clean cutting jigsaw blade for wood. Suitable for cutting soft wood, hard wood, plywood, chipboard, MDF and PVC plastic (10-45mm).

- Conically ground blade, teeth diagonally sharpened for very clean and precise cuts
- Made from alloyed tool steel. A flexible blade for cutting soft materials

Discount Group: C0502

Clean Cut		Fast Cut		CUT TYPE			Material Compatibility	
Thickness	Clean	Fast	Straight	Soft Wood	Hard Wood	Plywood	PVC Plastic	
10 - 45mm	●	●	●	●	●	●	●	
	Rough	Plunge	Curved					
	●	●						
O/A Length	Cut Length	Tooth Pitch	Blade Thickness	Blade Height	Blade Material	Qty	Item #	Barcode
100	75	6 TPI	1.45	7.8	HCS	2 Pack	H462 1002	9311963611006



H463 Wood Jigsaw Blade, General Purpose

General purpose jigsaw blade for fast cuts in wood. Suitable for cutting timber, soft wood and hard wood (5.0-50mm).

- Teeth side set and diagonally sharpened for fast, rough cuts
- Made from alloyed tool steel. A flexible blade for cutting soft materials

Discount Group: C0502

Fast Cut		CUT TYPE			Material Compatibility			
Thickness	Clean	Fast	Straight	Soft Wood	Hard Wood	Plywood	Chipboard	
5 - 50mm	●	●	●	●	●	●	●	
	Rough	Plunge	Curved					
	●	●						
O/A Length	Cut Length	Tooth Pitch	Blade Thickness	Blade Height	Blade Material	Qty	Item #	Barcode
100	75	6 TPI	1.27	7.8	HCS	2 Pack	H463 1002	9311963610993



H464 Specialty Jigsaw Blade, Plastics

Special jigsaw blade for fast cuts in plastics. Suitable for PVC plastic, soft wood, plywood, MDF and chipboard (4.0-50mm).

- Teeth side set and diagonally sharpened for fast, rough cuts
- Made from alloyed tool steel. A flexible blade for cutting soft materials

Discount Group: C0502

Fast Cut		CUT TYPE			Material Compatibility			
Thickness	Clean	Fast	Straight	PVC Plastic	Soft Wood	Plywood	Chipboard	
4.0 - 50mm	●	●	●	●	●	●	●	
	Rough	Plunge	Curved					
	●	●						
O/A Length	Cut Length	Tooth Pitch	Blade Thickness	Blade Height	Blade Material	Qty	Item #	Barcode
100	75	8.5 TPI	1.27	9.8	HCS	2 Pack	H464 1002	9311963610986



sutton



H465 Sheet Metal Jigsaw Blade, General Purpose

General purpose jigsaw blade for clean cuts in sheet metal. Suitable for cutting steel, copper and brass (1.2–2.0mm).

- Teeth milled and wavy set for fine, clean cuts
- Made from hardened High Speed Steel for cutting metals

Discount Group: C0502

		CUT TYPE						
		Thickness	Clean	Fast	Straight			
		1.2 – 2.0mm	●					
			Rough	Plunge	Curved			
O/A Length	Cut Length	Tooth Pitch	Blade Thickness	Blade Height	Blade Material	Qty	Item #	Barcode
75	55	21 TPI	1.0	7.8	HSS	2 Pack	H465 0752	9311963610931



H466 Sheet Metal Jigsaw Blade, Long Life

Flexible, long life, general purpose jigsaw blade for clean cuts in sheet metal. Suitable for cutting steel, stainless steel and copper (1.2–2.0mm).

- Teeth milled and wavy set for fine, clean cuts
- Made from Cobalt Bi-Metal HSS for flexibility, heat and break-resistance, lasting up to 10X longer than high carbon steel blades

Discount Group: C0502

		CUT TYPE						
		Thickness	Clean	Fast	Straight			
		1.2 – 2.0mm	●					
			Rough	Plunge	Curved			
O/A Length	Cut Length	Tooth Pitch	Blade Thickness	Blade Height	Blade Material	Qty	Item #	Barcode
75	55	21 TPI	1.0	7.8	Cobalt Bi-Metal	2 Pack	H466 0752	9311963610962



H467 Metal Jigsaw Blade, General Purpose

General purpose jigsaw blade for cutting metal. Suitable for cutting steel, non-ferrous metal and aluminium (2.5–6.0mm).

- Teeth milled and wavy set for fine, clean cuts
- Made from hardened High Speed Steel for cutting hard materials like metal, aluminium and non-ferrous metal

Discount Group: C0502

		CUT TYPE						
		Thickness	Clean	Fast	Straight			
		2.5 – 6.0mm	●					
			Rough	Plunge	Curved			
O/A Length	Cut Length	Tooth Pitch	Blade Thickness	Blade Height	Blade Material	Qty	Item #	Barcode
75	55	13 TPI	1.0	7.8	HSS	2 Pack	H467 0752	9311963610948





H468 Metal Jigsaw Blade, Aluminium

Special flexible jigsaw blade for cutting non-ferrous metals. Suitable for cutting non-ferrous metal, aluminium, steel and plastics (<30mm).

- Teeth milled and side set for aluminium cutting
- Made from Cobalt Bi-Metal HSS for flexibility, heat and break-resistance, lasting up to 10X longer than high carbon steel blades

Discount Group: C0502

COBALT BI-METAL		CUT TYPE				Material Compatibility			
		Thickness	Clean	Fast	Straight	Aluminium	Copper & Brass	Steel	PVC Plastic
	<30mm	Rough	Plunge	Curved					
O/A Length	Cut Length	Tooth Pitch	Blade Thickness	Blade Height	Blade Material	Qty	Item #	Barcode	
100	75	8.5 TPI	1.0	7.8	Cobalt Bi-Metal	2 Pack	H468 1002	9311963610955	

Saw Blades Jigsaw – Brand Equivalent

sutton®



Power Tool Suitability

AEG, Black & Decker*, Bosch, De Walt, Festool, Hitachi, Makita*, Metabo, Milwaukee, Ryobi*.

*New models only

BRAND EQUIVALENT LIST

SUTTON TOOLS	AEG	BOSCH	FESTOOL	LENOX	MAKITA	METABO	MILWAUKEE
H430 0752	373392	T101AO	S50K/1,4	320SC	-	23695	48425385
H431 1002	254061	T101B	S75/2,5	450S	B11/A85634	23634	48425240
H432 1002	346079	T101BR	-	450SR	B19/A85715	23650	48425540
H432 1302	R348072	-	-	-	-	-	-
H433 1002	-	-	-	-	-	-	-
H434 1002	-	-	HS75/3BiFC	-	-	-	-
H435 1002	274351	T101D	-	456S	B12/A85640	23635	48425500
H436 1002	373080	T101DP	S75/4FS	-	-	23655	-
H437 1002	213116	T144D	S75/4	406S	B16/A856842	3633	48425421
H437 1302	311633	T344D	S105/4	-	L2/P06454	23678	-
H438 1002	265312	-	-	-	P31572	-	-
H439 1002	399237	-	S75/4FSG	-	-	-	-
H440 1002	-	-	-	-	-	-	-
H441 1152	-	T234X	-	-	-	23675	-
H442 1302	399306	T301CD	-	-	B10/A85628	23654	-
H443 1152	-	T308B	-	-	-	-	-
H444 0802	373083	T101AIF	-	-	P31566	23948	-
H445 1152	-	T123XF	-	-	-	-	-
H446 1302	-	T345XF	-	-	-	23677	-
H447 0752	274652	T118G	-	-	B24/A85759	23636	-
H448 0752	254063	T118A	-	-	B22/A85737	23637	-
H449 0752	340011	T118AF	HS60/1,2BI	318S/324S	P47226	23971	48425161
H450 1302	-	-	-	-	P45749	-	-
H451 0752	254064	T118B	-	-	B23/A85743	23638	48425101
H452 0752	340012	T118BF	HS60/2bi	314S	P47232	23973	48425190
H453 1002	274315	T127D	-	-	B25/A85765	23639	-
H454 1302	274654	T318AF	HS105/1,2BI	518S	P47204	23978	48425166
H455 1002	254071	T111C	-	410S	B13/A85656	23632	48425220
H456 0802	373393	T118AHM	-	-	P05929	23662	-
H457 1001	399308	T141HM	HM75/4,5	-	P38766	23652	-
H458 0801	213232	T150Riff	R54/G	-	P38794	23658	-
H490 0005	254070	-	-	-	P24583	-	-
H491 0005	-	-	-	-	-	-	-
H492 0005	-	-	-	-	-	-	-

Saw Blades Technical Information

The performance of a saw blade depends on **1 Tool Material** **2 TPI** **3 Tooth Geometry** **4 Blade Length**.

These factors guarantee in conjunction with the correct use of the machine and blade selection the optimum result in cutting all materials.

1 Tool Material



High Carbon Steel:

- Most economical blade material
- Resistant to abrasion and deformation
- Ability to hold a cutting edge at elevated temperatures
- High flexibility

Recommended material to cut:



Hard Wood Soft Wood PVC Plastic Plasterboard



Cobalt Bi-Metal:

Flexible electron beam welded joint of high temperature alloyed sprung steel and cobalt high speed steel on the cutting edge to meet the highest demands given to a blade during use.

- Optimum cutting efficiency
- Prolonged service life
- Flexible making it virtually unbreakable

Recommended material to cut:



Pallet Wood & Nails Carbon Fibre



Steel Aluminium Copper & Brass Sheet Metal Metal Pipe



Carbide Tipped / Carbide Grit:

Alloyed tool steel with tungsten carbide teeth or tungsten carbide gritted cutting edge:

- Very abrasion resistant = longest life.
- Can withstand higher temperatures than standard high speed steel tools
- Maintain a sharper cutting edge, produce a better finish and allows faster cutting

Recommended material to cut:



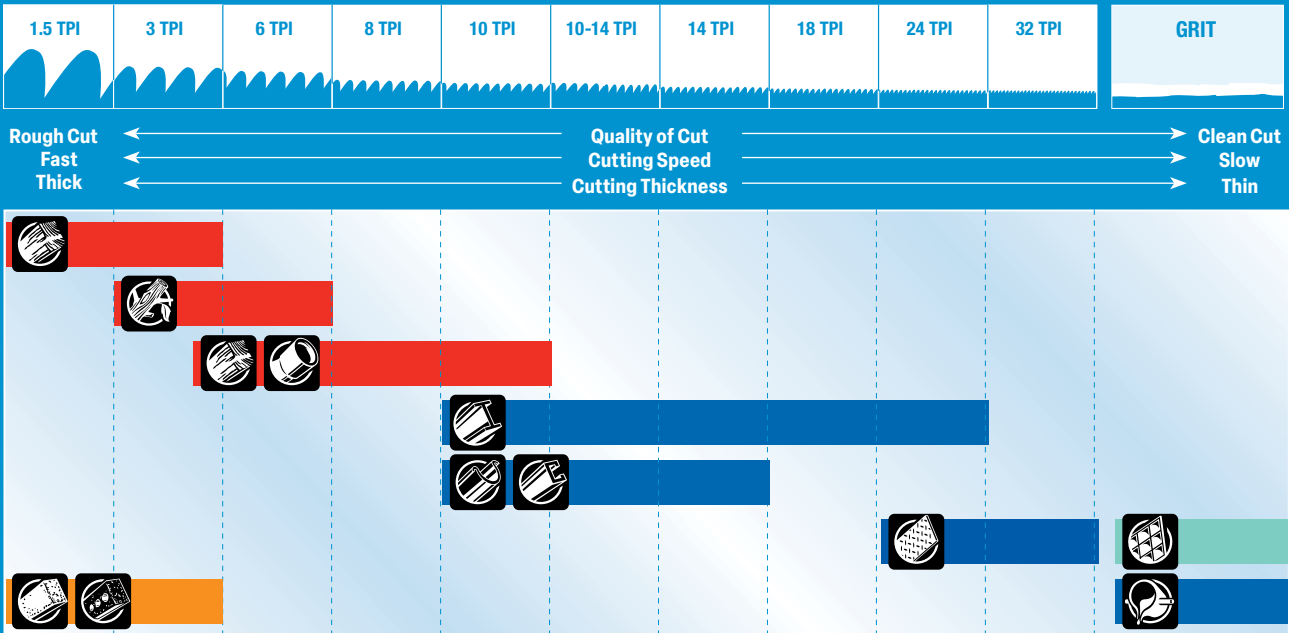
Hebel Brick Stainless Steel



Cast Iron Ceramic & Tiles

2 TPI (Teeth Per Inch) Selection Guide

← 1" →



3 Tooth Geometry Selection Guide



Side set toothing for rough cuts



Side set, diagonally sharpened toothing for rough quick cuts



Conically ground blade, teeth diagonally sharpened toothing for precise clean cuts



Wavy set toothing for fine and clean cuts

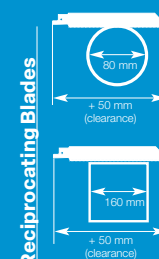
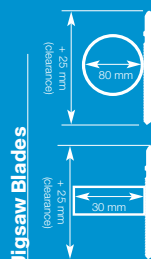


Reverse Teeth very clean and splinter free surface cuts

Tooth Shape: \square D = Roof Tooth \triangle P = Positive Tooth \triangle N = Normal Tooth

4 Blade Length Selection Guide

- As a general rule, the jigsaw blade should be 25mm longer than the workpiece thickness and the reciprocating blade should be 50mm longer than the workpiece thickness.
- 2-3 teeth need to work constantly in the material, the used tooth pitch also follows this rule of thumb.
- It is recommended to use saw blades with a small tooth pitch for thin material and a rough tooth pitch for thick material.



Material Codes: ■ Wood ■ Metal ■ Specialty ■ Masonry

Saw Blades Pipe Cutter – EzyGrind



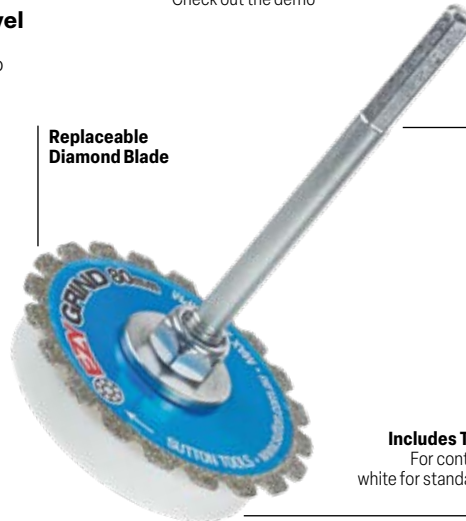
Check out the demo



sutton

The safest and fastest way to cut pipes at or below floor level

EzyGrind is the safest and fastest way to cut PVC and HDPE pipes (sizes from 40–150mm) at or below floor level. Especially suited to concrete slab construction, and difficult to access areas. EzyGrind will produce a clean professional finish with one cutting action.



Replaceable
Diamond Blade

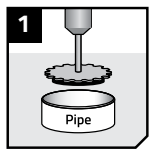
7mm Hex Shank
Fits all drill chucks

Includes Two Cutting Guides
For controlled cutting depth, white for standard PVC and black for HDPE pipes

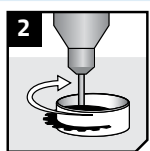
Discount Group: Z1201

Product Information					Item #	Barcode
Description	DWV	Pipe Size (mm) HDPE	HD PVC	Pieces		
EzyGrind Pipe Cutter					H600	
36mm EzyGrind Pipe Cutter	40-65	50-75	50-80	1	H600 0360	9311963556598
80mm EzyGrind Pipe Cutter	90-150	90-150	100-125	1	H600 0800	9311963556604
EzyGrind Replacement Blades					H601	
36mm Diamond Blade				2	H601 0360	9311963556611
80mm Diamond Blade				2	H601 0800	9311963556628

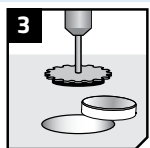
How to use



1. Insert the EzyGrind inside PVC pipe. Begin cutting by pushing firmly against the pipe wall until it cuts through



2. Operate in a clockwise direction. Maintain outward pressure.



3. Keep drill parallel to the pipe for a perfect cut.

Pipe Cutting Guide

Pipe	Diameter	Guide
DWV	90-150mm	White
HDPE	90-150mm	Black
PVC Storm	90-150mm	White
HD PVC	100-125mm	Black



DO NOT OPERATE IN EXCESS OF 2,500RPM

Note: Ensure the back side of the material being cut is clear of wires, cables, pipes and other objects that might cause hazards.

Saw Blades Hacksaw Blades



All Hard HSS (Blue)

For highly accurate cutting and high wear resistance.

Flexible HSS (Red)

General purpose blade with flexibility and safety.

Bi-Metal HSS (Orange)

Shatterproof blade with superior cutting power and flexibility.

Bi-Metal Cobalt (Purple)

Designed for tough materials such as stainless steel.

18 TPI: For 6–25mm materials.

eg pipe, angle iron and steel bar

24 TPI: For 3–6mm materials.

eg conduit, heavy sheet metal and tubing

32 TPI: For ≤3mm materials.

eg thin sheet metal and metal trim



Discount Group: C0204

Product Information		Item #	Barcode	Item #	Barcode
TPI / Description	Pieces	Carded - Quantity 2,3		Pieces	Bulk - Quantity 10,100
<div style="display: flex; justify-content: space-between; align-items: center;"> <div style="text-align: center;"> <p>18T x 500mm</p> </div> <div style="text-align: center;"> <p>All Hard High Speed Steel H345 0018</p> </div> <div style="text-align: center;"> </div> </div>					
All Hard HSS		H345		H346	
18T	2	H345 0018	9311963576510	10	H346 0018 9311963576558
24T	2	H345 0024	9311963576527	10	H346 0024 9311963576565
32T	2	H345 0032	9311963576534	10	H346 0032 9311963576572
3 Pce Combo Pack (18T, 24T, 32T)	3	H345 0003	9311963576541		
				H347	
18T Merchandiser (100 Pce)				100	H347 0018 9311963577012
24T Merchandiser (100 Pce)				100	H347 0024 9311963577029
32T Merchandiser (100 Pce)				100	H347 0032 9311963577036
<div style="display: flex; justify-content: space-between; align-items: center;"> <div style="text-align: center;"> <p>18T x 500mm</p> </div> <div style="text-align: center;"> <p>Flexible High Speed Steel H350 0018</p> </div> <div style="text-align: center;"> </div> </div>					
Flexible HSS		H350		H351	
18T	2	H350 0018	9311963576589	10	H351 0018 9311963576626
24T	2	H350 0024	9311963576596	10	H351 0024 9311963576633
32T	2	H350 0032	9311963576602	10	H351 0032 9311963576640
3 Pce Combo Pack (18T, 24T, 32T)	3	H350 0003	9311963576619		
				H352	
18T Merchandiser (100 Pce)				100	H352 0018 9311963577043
24T Merchandiser (100 Pce)				100	H352 0024 9311963577050
32T Merchandiser (100 Pce)				100	H352 0032 9311963577067
<div style="display: flex; justify-content: space-between; align-items: center;"> <div style="text-align: center;"> <p>18T x 500mm</p> </div> <div style="text-align: center;"> <p>Bi-Metal High Speed Steel H340 0018</p> </div> <div style="text-align: center;"> </div> </div>					
Bi Metal		H340		H341	
18T	2	H340 0018	9311963576442	10	H341 0018 9311963576480
24T	2	H340 0024	9311963576459	10	H341 0024 9311963576497
32T	2	H340 0032	9311963576466	10	H341 0032 9311963576503
3 Pce Combo Pack (18T, 24T, 32T)	3	H340 0003	9311963576473		
				H342	
18T Merchandiser (100 Pce)				100	H342 0018 9311963576985
24T Merchandiser (100 Pce)				100	H342 0024 9311963576992
32T Merchandiser (100 Pce)				100	H342 0032 9311963577005
<div style="display: flex; justify-content: space-between; align-items: center;"> <div style="text-align: center;"> <p>18T x 500mm</p> </div> <div style="text-align: center;"> <p>Cobalt High Speed Steel H355 0018</p> </div> <div style="text-align: center;"> </div> </div>					
Bi Metal Cobalt		H355		H356	
18T	2	H355 0018	9311963576657	10	H356 0018 9311963576695
24T	2	H355 0024	9311963576664	10	H356 0024 9311963576701
32T	2	H355 0032	9311963576671	10	H356 0032 9311963576718
3 Pce Combo Pack (18T, 24T, 32T)	3	H355 0003	9311963576688		
				H357	
18T Merchandiser (100 Pce)				100	H357 0018 9311963577074
24T Merchandiser (100 Pce)				100	H357 0024 9311963577081
32T Merchandiser (100 Pce)				100	H357 0032 9311963577098

Saw Blades Hacksaw Blades & Frames

sutton



H315 0300

H315 Hacksaw Frame 300mm

This sturdy anodised aluminium hacksaw is ideal for cutting off materials and is built for builder, tradesman and DIY use.

- Non-slip ergonomic soft grip handle
- Durable one piece body for ultra-high tension
- Adjustable tension mechanism
- 90° and 45° blade angles
- Includes HSS BI-METAL Saw Blade 24T 300mm



H308 0300

H308 Adjustable Length Mini Hacksaw 300mm

Sutton Tools Mini Hacksaw is designed for cutting steel, brass, aluminium and any other materials requiring quick cut-off. Standard 300mm blade slides into handle for small jobs in confined spaces.

- Blade top in handle to eliminate cutting hazard
- Ergonomic soft grip handle
- Adjustable length fits standard 8", 10" and 12" blades
- Made from Carbon Steel



H305 0150

H305 Junior Hacksaw 150mm

Sutton Tools Junior Hacksaw is designed for cutting steel, brass, aluminium and any other materials requiring quick cut-off. 150mm blade length suits small, intricate jobs in confined spaces.

- Durable metal frame for higher blade tension and improved cutting
- Ergonomic soft grip handle
- Easy tensioning mechanism
- Made from Carbon Steel

Discount Group: C0204

Product Information		Item #	Barcode
Description	Pieces		
Hacksaw Frames			
300mm Hacksaw Frame	1	H315 0300	9311963632933
300mm Adjustable Length Mini Hacksaw	1	H308 0300*	9311963600420
150mm Junior Hacksaw	1	H305 0150	9311963600390
Junior Hacksaw Blades			
152mm	10	H372 0032	9311963352138



H372 0032

* Not available once current stock is depleted.



All Hard HSS (Blue)

Capable of cutting even the most difficult materials with great accuracy.

Cutting Action
Consistent high performance and long life

Materials
All Hard HSS

Blade
Top quality high speed steel and hardened throughout

Application

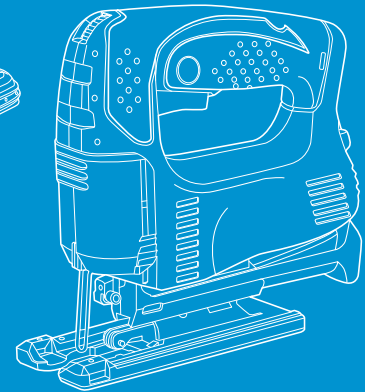
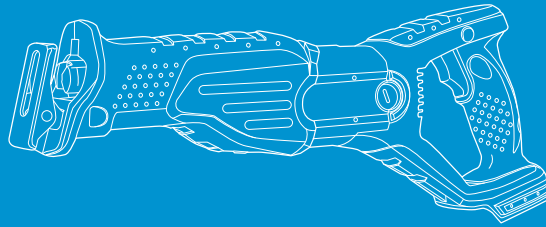
- Trade
- Industrial Application
- Automotive
- Metalworking
- Machine Shop

Discount Code: C0210

Product Information					Item #	Barcode
Size	TPI	Length	Pin Hole Centres	Order Qty		
mm		mm				
300mm					H201	
12 x 1	10T	300mm	8.2mm	10	H201 2510	9311963120768
12 x 1	14T	300mm	8.2mm	10	H201 2514	9311963120775
350mm					H202	
14 x 1	10T	350mm	8.2mm	10	H202 2510	9311963120782
14 x 1	14T	350mm	8.2mm	10	H202 2514	9311963120799
14 x 1.25	6T	350mm	8.2mm	10	H202 3206	9311963120805
14 x 1.25	10T	350mm	8.2mm	10	H202 3210	9311963120812
400mm					H203	
16 x 1.25	6T	400mm	8.2mm	10	H203 3206	9311963120836
16 x 1.25	10T	400mm	8.2mm	10	H203 3210	9311963120843
16 x 1.25	14T	400mm	8.2mm	10	H203 3214	9311963120829
450mm					H204	
18 x 1.25	6T	450mm	10.2mm	10	H204 3206	9311963120850
18 x 1.25	10T	450mm	10.2mm	10	H204 3210	9311963120867
18 x 1.50	6T	450mm	10.2mm	10	H204 3806	9311963120874
18 x 1.50	10T	450mm	10.2mm	10	H204 3810	9311963120881

Saw Blades Helpful Hints

sutton



Jigsaws and reciprocating saws are the most widely used power tools – along with the power drill and cordless screwdriver – this is due in part to their versatility.

A jigsaw is a tool used for cutting arbitrary curves, such as stencilled designs or other custom shapes. It can be used in a more artistic fashion than other saws, which typically cut in straight lines only. In this way, it is similar to the rasp and the chisel.

A reciprocating saw can be used comfortably on vertical surfaces. The cutting action is achieved through a push and pull reciprocating motion of the blade. It is capable of straight line cuts and tight-curve cuts.

How to use:

i. **Select a power tool suitable for your project.**

Hint: Make sure you are comfortable with your machine before you start cutting. Read the user's manual carefully and know all control features of your tool.

ii. **Select the correct blade for the material you are going to cut and attach it to the saw.**

iii. **Measure and mark the cut line you need for your project.**

For shapes like sink cut-outs in countertops you can use a template which is usually supplied with the sink or use the actual sink to scribe a cut line is your best option. For other shapes or special projects, creating a template for your cut out of paper or cardboard may make the process easier and more accurate. Draw the cutting design on your work piece. The mark has to be thick enough to be visible when sawdust accumulates.

iv. **Clamp your workpiece firmly.**

Hold smaller pieces such as pipe or conduit in a vice or attach it to the workbench with clamps.

v. **Position the blade close to the edge of the material where you will begin your cut.**

Start the cut on an edge of the work piece and not on a corner as you run the risk of chipping the corner.

Hint: Drill pilot hole for interior cuts. Make a 1/2" hole to allow the saw to commence cutting. Some saws have plunge cutting capability. In this instance, pilot hole is not required.

vi. **Commence cutting the material.**

Begin your cut by slowly squeezing the trigger of the saw, and when it is running at the desired speed, push it forward into the material you are cutting. Use a steady cutting speed and make slow movements to cut along the mark. To eliminate vibration, always cut close to the clamping point.

Hint: The adjustable shoe of a reciprocating saw is on a pivot, which allows it to turn when you work on bevelled or slanted wood so that the cut will go completely through without splintering the wood.

vii. **Stop occasionally and clear the sawdust.**

For example, with a brush or attach a dust extraction system if suitable to the tool.

Cutting Tips:

- Let the blade do the work. Never apply excessive forward pressure to the tool.
- Let the blade cool down naturally. Never use water or other liquids to cool the blade rapidly since it might break.
- Operate the saw with two hands. Let the blade run freely for a few seconds before commencing to cut.
- When cutting thin sheets of metal, place a piece of plywood on either side to control vibration and prevent tearing.
- Always wear safety equipment.

Operating Conditions:

It is important to work with the right speed and feeds to preserve the life of your saw blades and increase efficiency. Although the best speed for specific application is largely determined by experience, as a general rule, slower speeds should be used when cutting hard materials like metals. Faster speeds should be used when cutting soft materials like wood.

Always make sure that the blade is sharp to ensure less load on the tool and better cutting results.

In order to increase the life of a saw blade, a cooling liquid is recommended during cutting:

- Sutton Tools Venom Cutting Fluid (steel, metal)
- Petroleum (aluminium)
- Water (plastics, glass-fibre)

Safety Considerations:

- Use hearing and eye protection before commencing cutting.
- Jigsaws and reciprocating saws use big motors that take awhile to spin down after you let go of the trigger. Carefully hold onto the tool when you're finished with the cut till it stops completely.
- When restarting in the middle of a cut, back the saw off just a hair so the teeth aren't touching the material before you pull the trigger. The blade will bite in more predictably this way.
- Be careful to avoid kickback, which arises when the material you're cutting through tries to make the blade hold still, which then causes the body of the saw to reciprocate instead of the blade. If you experience more than mild kickback, immediately let go of the trigger and continue to hold the power tool firmly until the saw motor winds down.